

Summary

Lead Appr: WW

Clerk: _____

Lead Clerk: _____

Appr: MLH 8/22/25

Print Date:

4/16/2025

Acct ID: 518705

MTL: 062W180000800

Date: 8/21/25

Appr: MLH

Prop Class: 559

RMV Prop Class: 559 509

Situs: 3775 BROOKLAKE RD NE SALEM OR 97303

MaSaNh: 04 06 000

Unit: 95064

Year: 2025

Last Date Appraised: 05/12/2020

Appraiser: GERARDO RAMIREZ HERNANDEZ

Retag: Y N

Tag info:

Owner: VAN KLAVEREN INHERITANCE TR &

Roll Type: R

Cycle Tag Sales Verification Other: Clean up Inspection level: 1 2 3 4 LCB TTO INSP

AV: 246188

RMV Land: 620090

RMV Imp: 239088

RMV Total: 859178

MAV: 201990

MSAV: 56858

SAV: 140626

Comment: LEVEL 4 05-12-20 WV06//

Notations

RP/MS	Code	Description
MS	ZONED	FARM EFU ZONED

update Inventory

Input MLH 8/21/25

Farm Nursery

OSDs

Count	Code	Description	RMV	Code Area	Exception
1	SAA	SA OSD - AVERAGE	50000	01410	0

Land

Site: 2 Code Area: 01410 Size: 1.00 Acres Use Code: 005 Zone: REST SAV Use: 011 Exception: 0
 Class: Value Source: Farm Homesite Description: RMV: 19880 Exception: Y N
 Adjustment(s): GSOIL, IRR Fire Patrol: Description:
 Comments: Liability year - 2009 / 00100210

Site: 3 Code Area: 01410 Size: 17.67 Acres Use Code: 005 Zone: REST SAV Use: 011 Exception: 0
 Class: 2BI Value Source: Farm Use - EFU Description: TWO BENCH IRR RMV: 404060 Exception: Y N
 Adjustment(s): GSOIL, IRR Fire Patrol: Description:
 Comments: Liability year - 1976 / 00100210

Site: 4 Code Area: 01410 Size: 7.00 Acres Use Code: 005 Zone: REST SAV Use: 011 Exception: 0
 Class: 4BI Value Source: Farm Use - EFU Description: FOUR BENCH IRR RMV: 146150 Exception: Y N
 Adjustment(s): GSOIL, IRR Fire Patrol: Description:
 Comments: Liability year - 1976 / 00100210/ 02-03: F02-122 LLA BETWEEN R18710 AND 18705, BECAUSE OF ACREAGE CORRECTION, BOTH ACCTS LOST ACREAGE.

Improvements - Residence / Manufactured Structures

Bldg: 5 Code Area: 01410 Stat Class: 138 Year Blt: 2002 Eff Year Blt: 2002 Sq.Ft: 0 % Complete: 100
 Desc: Res other improvements Dimensions: RMV: 64500
 Func Obsc: 100 Econ %: 100 Other %: 100 Exception: 0 Adjust: Adjust RMV: 0 *N/C*

Floors

Type	Class	Display Group	Floor Size	Beds	Baths	Yr Blt	Eff Yr Blt	Inventory	Exception
Garage Attached	3	Finished	936	0	FB-1	2002	2002	ROOF, BATH - 1	Y N

Accessories

Description Class Size SqFt Eff Yr Blt RMV Quantity
 No accessory data available

Bldg: 14 Code Area: 01410 Stat Class: 108 Year Blt: 2012 Eff Year Blt: 2012 Sq.Ft: 0 % Complete: 100
 Desc: Residential Other Improvements Dimensions: *10x32* RMV: 9230
 Func Obsc: 100 Econ %: 100 Other %: 100 Exception: 0 Adjust: Adjust RMV: 0 *I/O*

Floors

No floor data available

Accessories

Description	Class	Size SqFt	Eff Yr Blt	RMV	Quantity	Exception
MOBILE OFFICE	0	<i>300</i>	2012	9230	1	Y N

Improvements - Accessory Buildings

Bldg: 1 Code Area: 01410 Stat Class: 351 Year Blt: 1997 Eff Year Blt: *1999* Sq.Ft: 1152 % Complete: 100
 Desc: General Purpose Building (GB) Dimensions: 48x24 RMV: 13990
 Func Obsc: 100 Econ %: 100 Other %: 100 Exception: 0 Adjust: Adjust RMV: 0 *I/O*

Floors

Type	Class	Display Group	Floor Size	Beds	Baths	Yr Blt	Eff Yr Blt	Inventory	Exception
General Purpose Bldg	6	Finished	1152	0	0	1997	1997	FAIR <i>(38x24) (AJE) (10x24 Good)</i>	Y N

Accessories

Description	Class	Size SqFt	Eff Yr Blt	RMV	Quantity
-------------	-------	-----------	------------	-----	----------

No accessory data available

Bldg: 2	Code Area: 01410	Stat Class: 353	Year Blt: 1998	Eff Year Blt: 1998	Sq.Ft: 2400	% Complete: 100
Desc: Machine Shed (MS)					Dimensions: 80x30	RMV: 16610
Func Obsc: 100	Econ %: 100	Other %: 100	Exception: 0		Adjust:	Adjust RMV: 0

Floors

Type	Class	Display Group	Floor Size	Beds	Baths	Yr Blt	Eff Yr Blt	Inventory
Machine Shed	5	Finished	2400	0	0	1998	1998	FAIR
Exception: Y N								

Accessories

Description	Class	Size SqFt	Eff Yr Blt	RMV	Quantity
-------------	-------	-----------	------------	-----	----------

No accessory data available

Bldg: 3	Code Area: 01410	Stat Class: 357	Year Blt: 1998	Eff Year Blt: 1998	Sq.Ft: 1920	% Complete: 100
Desc: Frost Control					Dimensions: 96x20	RMV: 960
Func Obsc: 100	Econ %: 100	Other %: 100	Exception: 0		Adjust:	Adjust RMV: 0

Floors

Type	Class	Display Group	Floor Size	Beds	Baths	Yr Blt	Eff Yr Blt	Inventory
Frost Control	4	Finished	1920	0	0	1998	1998	FAIR
Exception: Y N								

Accessories

Description	Class	Size SqFt	Eff Yr Blt	RMV	Quantity
-------------	-------	-----------	------------	-----	----------

No accessory data available

Bldg: 4	Code Area: 01410	Stat Class: 354	Year Blt: 2002	Eff Year Blt: 2002	Sq.Ft: 864	% Complete: 100
Desc: Lean-to Light (LTL)					Dimensions: 48x18	RMV: 2610
Func Obsc: 100	Econ %: 100	Other %: 100	Exception: 0		Adjust:	Adjust RMV: 0

Floors

Type	Class	Display Group	Floor Size	Beds	Baths	Yr Blt	Eff Yr Blt	Inventory
Lean-to Light Duty	4	Finished	864	0	0	2002	2002	FAIR
Exception: Y N								

Accessories

Description	Class	Size SqFt	Eff Yr Blt	RMV	Quantity
-------------	-------	-----------	------------	-----	----------

No accessory data available

Bldg: 6	Code Area: 01410	Stat Class: 332	Year Blt: 1990	Eff Year Blt: 1990	Sq.Ft: 2880	% Complete: 100
Desc: Commercial Greenhouse (CG)					Dimensions: 96x30	RMV: 2500
Func Obsc: 100	Econ %: 100	Other %: 100	Exception: 0		Adjust:	Adjust RMV: 0

Floors

Type	Class	Display Group	Floor Size	Beds	Baths	Yr Blt	Eff Yr Blt	Inventory
Commerical Greenhouse	4	Finished	2880	0	0	1990	1990	FAIR
Exception: Y N								

Accessories

Description	Class	Size SqFt	Eff Yr Blt	RMV	Quantity
-------------	-------	-----------	------------	-----	----------

No accessory data available

Bldg: 7	Code Area: 01410	Stat Class: 357	Year Blt:	Eff Year Blt:	Sq.Ft: 3000	% Complete: 100
Desc: Frost Control					Dimensions: 150x20	RMV: 1500
Func Obsc: 100	Econ %: 100	Other %: 100	Exception: 0		Adjust:	Adjust RMV: 0

Floors

Type	Class	Display Group	Floor Size	Beds	Baths	Yr Blt	Eff Yr Blt	Inventory
Frost Control	4	Finished	3000	0	0	0	0	FAIR
Exception: Y N								

Accessories

Description	Class	Size SqFt	Eff Yr Blt	RMV	Quantity
-------------	-------	-----------	------------	-----	----------

No accessory data available

Bldg: 8	Code Area: 01410	Stat Class: 341	Year Blt: 1997	Eff Year Blt: 1997	Sq.Ft: 264	% Complete: 100
Desc: Multi Purpose Shed (MP)					Dimensions: 12x22	RMV: 8410
Func Obsc: 100	Econ %: 100	Other %: 100	Exception: 0		Adjust:	Adjust RMV: 0

Floors

Type	Class	Display Group	Floor Size	Beds	Baths	Yr Blt	Eff Yr Blt	Inventory
Multi-Purpose Bldg	6	Finished	264	0	HB-1	1997	1997	EXCLT, BTH - 1
Exception: Y N								

Accessories

Description **Class** **Size SqFt** **Eff Yr Blt** **RMV** **Quantity**

No accessory data available

Bldg: 9 Code Area: 01410 Stat Class: 351 Year Blt: 2007 Eff Year Blt: 2007 Sq.Ft: 3456 % Complete: 100
Desc: General Purpose Building (GB) Dimensions: 48x72 RMV: 44830
Func Obsc: 100 Econ %: 100 Other %: 100 Exception: 0 Adjust: Adjust RMV: 0 *N/C*

Floors

Type	Class	Display Group	Floor Size	Beds	Baths	Yr Blt	Eff Yr Blt	Inventory	Exception: Y N
General Purpose Bldg	5	Finished	3456	0	0	2007	2007	FAIR	

Accessories

Description **Class** **Size SqFt** **Eff Yr Blt** **RMV** **Quantity**

No accessory data available

Bldg: 10 Code Area: 01410 Stat Class: 355 Year Blt: 2007 Eff Year Blt: 2007 Sq.Ft: 672 % Complete: 100
Desc: Lean-to Heavy (LTH) Dimensions: ~~14x48~~ RMV: 3590
Func Obsc: 100 Econ %: 100 Other %: 100 Exception: 0 Adjust: Adjust RMV: 0 *I/O*

Floors

Type	Class	Display Group	Floor Size	Beds	Baths	Yr Blt	Eff Yr Blt	Inventory	Exception: Y N
Lean-to Heavy Duty	4	Finished	672	0	0	2007	2007	FAIR	

Accessories

Description **Class** **Size SqFt** **Eff Yr Blt** **RMV** **Quantity**

No accessory data available

Bldg: 11 Code Area: 01410 Stat Class: 341 Year Blt: 2007 Eff Year Blt: 2007 Sq.Ft: 240 % Complete: 100
Desc: Multi Purpose Shed (MP) Dimensions: 12x20 RMV: 4150
Func Obsc: 100 Econ %: 100 Other %: 100 Exception: 0 Adjust: Adjust RMV: 0 *N/C*

Floors

Type	Class	Display Group	Floor Size	Beds	Baths	Yr Blt	Eff Yr Blt	Inventory	Exception: Y N
Multi-Purpose Bldg	5	Finished	240	0	0	2007	2007	FAIR	

Accessories

Description **Class** **Size SqFt** **Eff Yr Blt** **RMV** **Quantity**

No accessory data available

Bldg: 12 Code Area: 01410 Stat Class: 357 Year Blt: 2007 Eff Year Blt: 2007 Sq.Ft: 3000 % Complete: 100
Desc: Frost Control Dimensions: 150x20 RMV: 5373
Func Obsc: 100 Econ %: 100 Other %: 100 Exception: 0 Adjust: Adjust RMV: 0 *delete*

Floors

Type	Class	Display Group	Floor Size	Beds	Baths	Yr Blt	Eff Yr Blt	Inventory	Exception: Y N
Frost Control	4	Finished	3000	0	0	2007	2007	FAIR	

Accessories

Description **Class** **Size SqFt** **Eff Yr Blt** **RMV** **Quantity**

No accessory data available

Bldg: 13 Code Area: 01410 Stat Class: 301 Year Blt: Eff Year Blt: Sq.Ft: ~~0~~ *14x48* % Complete: 100
Desc: Accessory Improvements & Misc. Dimensions: RMV: ~~3100~~
Func Obsc: 100 Econ %: 100 Other %: 100 Exception: 0 Adjust: Adjust RMV: 0

Floors

Type	Class	Display Group	Floor Size	Beds	Baths	Yr Blt	Eff Yr Blt	Inventory	Exception: Y N
Building Structure	0	Finished	0	0	0	0	0	FAIR	

loading dock goes w/ Bldg #9 use MAU

Accessories

Description **Class** **Size SqFt** **Eff Yr Blt** **RMV** **Quantity**

No accessory data available

Bldg: 15 Code Area: 01410 Stat Class: 351 Year Blt: 2003 Eff Year Blt: 2003 Sq.Ft: 1500 % Complete: 100
Desc: General Purpose Building (GB) Dimensions: ~~30x50~~ RMV: 13310
Func Obsc: 100 Econ %: 100 Other %: 100 Exception: 0 Adjust: Adjust RMV: 0 *I/O*

Floors

Type	Class	Display Group	Floor Size	Beds	Baths	Yr Blt	Eff Yr Blt	Inventory	Exception: Y N
General Purpose Bldg	4	Finished	1500	0	0	2003	2003	FAIR	

Accessories

Description **Class** **Size SqFt** **Eff Yr Blt** **RMV** **Quantity**

No accessory data available

Bldg: 16 Code Area: 01410 Stat Class: 332 Year Blt: 1990 Eff Year Blt: 1990 Sq.Ft: 2880 % Complete: 100
 Desc: Commercial Greenhouse (CG) Dimensions: 30x96 RMV: 2500
 Func Obsc: 100 Econ %: 100 Other %: 100 Exception: 0 Adjust: Adjust RMV: 0 I/O

Floors

Type	Class	Display Group	Floor Size	Beds	Baths	Yr Blt	Eff Yr Blt	Inventory	Exception: Y N
Commerical Greenhouse	4	Finished	2880	0	0	1990	1990	F97 ✓	

Accessories

Description	Class	Size SqFt	Eff Yr Blt	RMV	Quantity
No accessory data available					

Bldg: 17 Code Area: 01410 Stat Class: 357 Year Blt: 1998 Eff Year Blt: 1998 Sq.Ft: 1920 % Complete: 100
 Desc: Frost Control Dimensions: 20x96 RMV: 960
 Func Obsc: 100 Econ %: 100 Other %: 100 Exception: 0 Adjust: Adjust RMV: 0 I/O

Floors

Type	Class	Display Group	Floor Size	Beds	Baths	Yr Blt	Eff Yr Blt	Inventory	Exception: Y N
Frost Control	4	Finished	1920	0	0	1998	1998		

Accessories

Description	Class	Size SqFt	Eff Yr Blt	RMV	Quantity
No accessory data available					

Bldg: 18 Code Area: 01410 Stat Class: 357 Year Blt: 1998 Eff Year Blt: 1998 Sq.Ft: 1920 % Complete: 100
 Desc: Frost Control Dimensions: 20x97 RMV: 960
 Func Obsc: 100 Econ %: 100 Other %: 100 Exception: 0 Adjust: Adjust RMV: 0 I/O

Floors

Type	Class	Display Group	Floor Size	Beds	Baths	Yr Blt	Eff Yr Blt	Inventory	Exception: Y N
Frost Control	4	Finished	1920	0	0	1998	1998		

Accessories

Description	Class	Size SqFt	Eff Yr Blt	RMV	Quantity
No accessory data available					

Bldg: 19 Code Area: 01410 Stat Class: 357 Year Blt: 1998 Eff Year Blt: 1998 Sq.Ft: 1920 % Complete: 100
 Desc: Frost Control Dimensions: 20x96 RMV: 960
 Func Obsc: 100 Econ %: 100 Other %: 100 Exception: 0 Adjust: Adjust RMV: 0 I/O

Floors

Type	Class	Display Group	Floor Size	Beds	Baths	Yr Blt	Eff Yr Blt	Inventory	Exception: Y N
Frost Control	4	Finished	1920	0	0	1998	1998		

Accessories

Description	Class	Size SqFt	Eff Yr Blt	RMV	Quantity
No accessory data available					

Bldg: 20 Code Area: 01410 Stat Class: 357 Year Blt: 1998 Eff Year Blt: 1998 Sq.Ft: 1920 % Complete: 100
 Desc: Frost Control Dimensions: 20x96 RMV: 960
 Func Obsc: 100 Econ %: 100 Other %: 100 Exception: 0 Adjust: Adjust RMV: 0 I/O

Floors

Type	Class	Display Group	Floor Size	Beds	Baths	Yr Blt	Eff Yr Blt	Inventory	Exception: Y N
Frost Control	4	Finished	1920	0	0	1998	1998		

Accessories

Description	Class	Size SqFt	Eff Yr Blt	RMV	Quantity
No accessory data available					

Bldg: 21 Code Area: 01410 Stat Class: 357 Year Blt: 1998 Eff Year Blt: 1998 Sq.Ft: 1920 % Complete: 100
 Desc: Frost Control Dimensions: 20x96 RMV: 960
 Func Obsc: 100 Econ %: 100 Other %: 100 Exception: 0 Adjust: Adjust RMV: 0 I/O

Floors

Type	Class	Display Group	Floor Size	Beds	Baths	Yr Blt	Eff Yr Blt	Inventory	Exception: Y N
Frost Control	4	Finished	1920	0	0	1998	1998		

Accessories

Description	Class	Size SqFt	Eff Yr Blt	RMV	Quantity
No accessory data available					

Bldg: 22 Code Area: 01410 Stat Class: 357 Year Blt: 1998 Eff Year Blt: 1998 Sq.Ft: 1920 % Complete: 100
 Desc: Frost Control Dimensions: 20x96 RMV: 960 I/O

Func Obsc: 100 Econ %: 100 Other %: 100 Exception: 0 Adjust: Adjust RMV: 0

Floors

Type	Class	Display Group	Floor Size	Beds	Baths	Yr Blt	Eff Yr Blt	Inventory
Frost Control	4	Finished	1920	0	0	1998	1998	Exception: Y N

Accessories

Description	Class	Size SqFt	Eff Yr Blt	RMV	Quantity
No accessory data available					

Bldg: 23 Code Area: 01410 Stat Class: 357 Year Blt: 1998 Eff Year Blt: ²⁰⁰⁹1998 Sq.Ft: 1920 % Complete: 100
 Desc: Frost Control Dimensions: ^{20x96}20x96 RMV: 960
 Func Obsc: 100 Econ %: 100 Other %: 100 Exception: 0 Adjust: Adjust RMV: 0 I/O

Floors

Type	Class	Display Group	Floor Size	Beds	Baths	Yr Blt	Eff Yr Blt	Inventory
Frost Control	4	Finished	1920	0	0	1998	1998	Exception: Y N

Accessories

Description	Class	Size SqFt	Eff Yr Blt	RMV	Quantity
No accessory data available					

Bldg: 24 Code Area: 01410 Stat Class: 357 Year Blt: 1998 Eff Year Blt: ²⁰⁰⁹1998 Sq.Ft: 1920 % Complete: 100
 Desc: Frost Control Dimensions: ^{20x96}20x96 RMV: 960
 Func Obsc: 100 Econ %: 100 Other %: 100 Exception: 0 Adjust: Adjust RMV: 0 I/O

Floors

Type	Class	Display Group	Floor Size	Beds	Baths	Yr Blt	Eff Yr Blt	Inventory
Frost Control	4	Finished	1920	0	0	1998	1998	Exception: Y N

Accessories

Description	Class	Size SqFt	Eff Yr Blt	RMV	Quantity
No accessory data available					

Bldg: 25 Code Area: 01410 Stat Class: 357 Year Blt: 1998 Eff Year Blt: ²⁰⁰⁹1998 Sq.Ft: 1920 % Complete: 100
 Desc: Frost Control Dimensions: ^{20x96}20x96 RMV: 960
 Func Obsc: 100 Econ %: 100 Other %: 100 Exception: 0 Adjust: Adjust RMV: 0 I/O

Floors

Type	Class	Display Group	Floor Size	Beds	Baths	Yr Blt	Eff Yr Blt	Inventory
Frost Control	4	Finished	1920	0	0	1998	1998	Exception: Y N

Accessories

Description	Class	Size SqFt	Eff Yr Blt	RMV	Quantity
No accessory data available					

Bldg: 26 Code Area: 01410 Stat Class: 357 Year Blt: 1998 Eff Year Blt: ²⁰⁰⁹1998 Sq.Ft: 1920 % Complete: 100
 Desc: Frost Control Dimensions: ^{20x96}20x96 RMV: 960
 Func Obsc: 100 Econ %: 100 Other %: 100 Exception: 0 Adjust: Adjust RMV: 0 I/O

Floors

Type	Class	Display Group	Floor Size	Beds	Baths	Yr Blt	Eff Yr Blt	Inventory
Frost Control	4	Finished	1920	0	0	1998	1998	Exception: Y N

Accessories

Description	Class	Size SqFt	Eff Yr Blt	RMV	Quantity
No accessory data available					

Bldg: 27 Code Area: 01410 Stat Class: 357 Year Blt: 1998 Eff Year Blt: ²⁰⁰⁹1998 Sq.Ft: 1920 % Complete: 100
 Desc: Frost Control Dimensions: ^{20x96}20x96 RMV: 960
 Func Obsc: 100 Econ %: 100 Other %: 100 Exception: 0 Adjust: Adjust RMV: 0 I/O

Floors

Type	Class	Display Group	Floor Size	Beds	Baths	Yr Blt	Eff Yr Blt	Inventory
Frost Control	4	Finished	1920	0	0	1998	1998	Exception: Y N

Accessories

Description	Class	Size SqFt	Eff Yr Blt	RMV	Quantity
No accessory data available					

Bldg: 28 Code Area: 01410 Stat Class: 357 Year Blt: Eff Year Blt: ²⁰⁰⁹1998 Sq.Ft: 3000 % Complete: 100
 Desc: Frost Control Dimensions: ^{30x150}30x150 RMV: 1500
 Func Obsc: 100 Econ %: 100 Other %: 100 Exception: 0 Adjust: Adjust RMV: 0 I/O

Floors

Type	Class	Display Group	Floor Size	Beds	Baths	Yr Blt	Eff Yr Blt	Inventory
Frost Control	4	Finished	3000	0	0	0	0	Exception: Y N

Accessories

Description	Class	Size SqFt	Eff Yr Blt	RMV	Quantity
No accessory data available					

Bldg: 29 Code Area: 01410 Stat Class: 357 Year Blt: Eff Year Blt: ²⁰⁰⁹ Sq.Ft: 3000 % Complete: 100
 Desc: Frost Control Dimensions: ^{30x150} RMV: 1500
 Func Obsc: 100 Econ %: 100 Other %: 100 Exception: 0 Adjust: Adjust RMV: 0 I/O

Floors

Type	Class	Display Group	Floor Size	Beds	Baths	Yr Blt	Eff Yr Blt	Inventory
Frost Control	4	Finished	3000	0	0	0	0	Exception: Y N

Accessories

Description	Class	Size SqFt	Eff Yr Blt	RMV	Quantity
No accessory data available					

Bldg: 30 Code Area: 01410 Stat Class: 357 Year Blt: Eff Year Blt: ²⁰⁰⁹ Sq.Ft: 3000 % Complete: 100
 Desc: Frost Control Dimensions: ^{20x150} RMV: 1500
 Func Obsc: 100 Econ %: 100 Other %: 100 Exception: 0 Adjust: ³⁰ Adjust RMV: 0 I/O

Floors

Type	Class	Display Group	Floor Size	Beds	Baths	Yr Blt	Eff Yr Blt	Inventory
Frost Control	4	Finished	3000	0	0	0	0	Exception: Y N

Accessories

Description	Class	Size SqFt	Eff Yr Blt	RMV	Quantity
No accessory data available					

Bldg: 31 Code Area: 01410 Stat Class: 357 Year Blt: 2007 Eff Year Blt: ²⁰⁰⁹ Sq.Ft: 3000 % Complete: 100
 Desc: Frost Control Dimensions: ^{20x150} RMV: 5373
 Func Obsc: 100 Econ %: 100 Other %: 100 Exception: 0 Adjust: ³⁰ Adjust RMV: 0 I/O

Floors

Type	Class	Display Group	Floor Size	Beds	Baths	Yr Blt	Eff Yr Blt	Inventory
Frost Control	4	Finished	3000	0	0	2007	2007	Exception: Y N

Accessories

Description	Class	Size SqFt	Eff Yr Blt	RMV	Quantity
No accessory data available					

Bldg: 32 Code Area: 01410 Stat Class: 357 Year Blt: 2007 Eff Year Blt: ²⁰⁰⁹ Sq.Ft: 3000 % Complete: 100
 Desc: Frost Control Dimensions: ^{20x150} RMV: 5373
 Func Obsc: 100 Econ %: 100 Other %: 100 Exception: 0 Adjust: Adjust RMV: 0 I/O

Floors

Type	Class	Display Group	Floor Size	Beds	Baths	Yr Blt	Eff Yr Blt	Inventory
Frost Control	4	Finished	3000	0	0	2007	2007	Exception: Y N

Accessories

Description	Class	Size SqFt	Eff Yr Blt	RMV	Quantity
No accessory data available					

Bldg: 33 Code Area: 01410 Stat Class: 357 Year Blt: 2007 Eff Year Blt: ²⁰⁰⁹ Sq.Ft: 3000 % Complete: 100
 Desc: Frost Control Dimensions: ^{20x150} RMV: 5373
 Func Obsc: 100 Econ %: 100 Other %: 100 Exception: 0 Adjust: Adjust RMV: 0 I/O

Floors

Type	Class	Display Group	Floor Size	Beds	Baths	Yr Blt	Eff Yr Blt	Inventory
Frost Control	4	Finished	3000	0	0	2007	2007	Exception: Y N

Accessories

Description	Class	Size SqFt	Eff Yr Blt	RMV	Quantity
No accessory data available					

Bldg: 34 Code Area: 01410 Stat Class: 357 Year Blt: 2007 Eff Year Blt: ²⁰⁰⁹ Sq.Ft: 3000 % Complete: 100
 Desc: Frost Control Dimensions: ^{20x150} RMV: 5373
 Func Obsc: 100 Econ %: 100 Other %: 100 Exception: 0 Adjust: Adjust RMV: 0 I/O

Floors

Type	Class	Display Group	Floor Size	Beds	Baths	Yr Blt	Eff Yr Blt	Inventory
Frost Control	4	Finished	3000	0	0	2007	2007	Exception: Y N

Accessories

Description	Class	Size SqFt	Eff Yr Blt	RMV	Quantity
No accessory data available					

Bldg: 35 Code Area: 01410 Stat Class: 357 Year Blt: 2007 Eff Year Blt: 2007 Sq.Ft: 3000 % Complete: 100
 Desc: Frost Control Dimensions: 20x150 RMV: 5373
 Func Obsc: 100 Econ %: 100 Other %: 100 Exception: 0 Adjust: Adjust RMV: 0

Floors

Type	Class	Display Group	Floor Size	Beds	Baths	Yr Blt	Eff Yr Blt	Inventory
Frost Control	4	Finished	3000	0	0	2007	2007	Exception: Y N

Accessories

Description	Class	Size SqFt	Eff Yr Blt	RMV	Quantity
No accessory data available					

(8) 357 FC 4 114x30 2009 Exempt

107 YIS for Manuf
 YI SA 2002 I/O
 355 LTH 12x24 2009 I/O

**2025 Commercial Appraisal
Marion County**

Cost Approach OFFICE LOW RISE

ZIP Code	97303	Date Collected	8/21/2025	Appraisal Area	04-06-000	Local Multiplier	(Default)
Reporting Date	01/2025	Cost Data Set	01/2025			Architect's Fees	(Default)
Notes	Eff. Age Adjustment (N/A)						

Included Improvements

Account	Bldg #	Code Area	Description	Stat Class	Size	%	Value
518705	36	01410	OFFICE LOW RISE	581	320	100.00	\$45,781

Section OFFICE LOW RISE

Type	Building						
Size	320 sq ft	Perimeter	84	# of Stories	1	(1 in building)	

Occupancy

Code	Description	%	Quality	Class	Height (ft)
599	Relocatable Office	100	2.00	D Wood or Steel Framed Exterior Walls	8

Components

Code	Description	Quantity	Unit Cost	Total Cost New	Less Depreciation	Total Cost Depreciated
1	Base Cost	320	\$170.64	\$54,605	\$17,474	\$37,131
3	Default Heating	320	\$12.23	\$3,914	\$1,252	\$2,662
				\$58,519	\$18,726	\$39,793

Additions

Type	Description	Units	Cost	Cost New	Depr	Depr Cost	LCM	Trend	Base Date
Base Cost	EP&O 15% RCN	0	\$8,777.00	\$8,777.00		\$5,968.00			
						\$5,968			

Depreciation

MarshallSwift 10 / (Marshall & Swift) : \$21,535
 Additional Functional 0.00 %
 External 0.00 %

Section Totals OFFICE LOW RISE

MarshallSwift	PP	Structures	% Comp	M&E	Section Value
\$45,781	=	\$45,781	*	+	= \$45,781

Approach Totals

Personal Property	Structures	Mach/Equip	Final Values Total
\$0	\$45,781	\$0	\$45,781

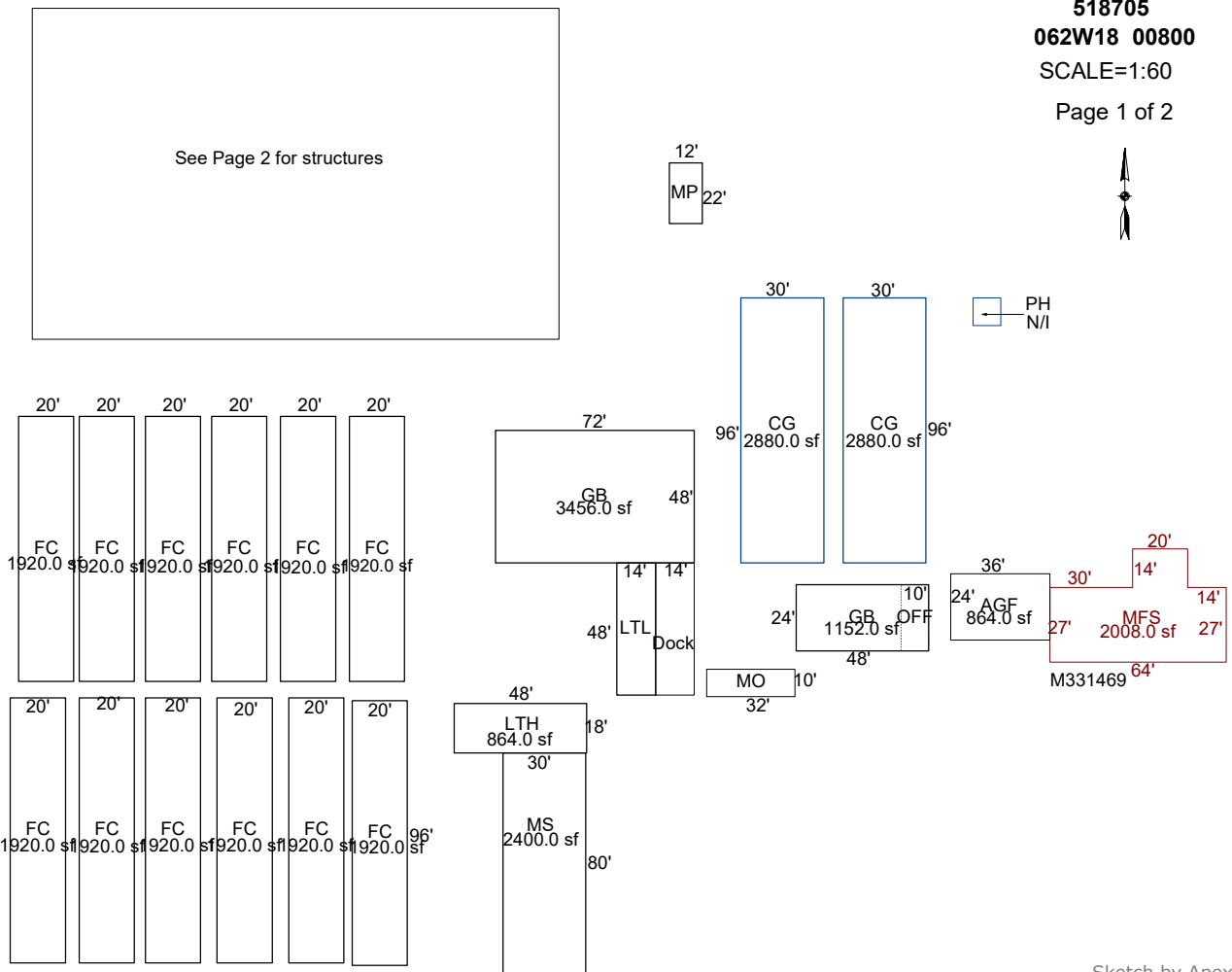
8/21/2025 12:04:37 PM Page 1 of 1

SKETCH/AREA TABLE ADDENDUM

SUBJECT INFO

File No.: 518705 Parcel No.: 062W18 00800
 Property Address: 3775 Brooklake Rd NE
 City: Salem County: State: Or ZipCode: 97303
 Owner:
 Client: Client Address:
 Appraiser Name: Inspection Date:

SKETCH



Sketch by ApexSketch

AREA CALCULATIONS SUMMARY

Code	Description	Factor	Net Size	Perimeter	Net Totals
GBA1	FC	1.0	1920.0	232.0	
	FC	1.0	1920.0	232.0	
	FC	1.0	1920.0	232.0	
	FC	1.0	1920.0	232.0	
	FC	1.0	1920.0	232.0	
	FC	1.0	1920.0	232.0	
	FC	1.0	1920.0	232.0	
	FC	1.0	1920.0	232.0	
	MP	1.0	264.0	68.0	
	MS	1.0	2400.0	220.0	
	LTH	1.0	864.0	132.0	
	LTL	1.0	672.0	124.0	
FC	1.0	1920.0	232.0		
GB	1.0	3456.0	240.0		
CG	1.0	2880.0	252.0		
CG	1.0	2880.0	252.0		
FC	1.0	1920.0	232.0		
9 addl items					
	Net LIVABLE	cnt	1 (rounded)		3,192
	Net BUILDING	cnt	0 (rounded)		37,608

COMMENT TABLE 1

UPD BY PHU 07.08.20
 UPDATED BY CLOBERG 01/20/26

COMMENT TABLE 2

05.12.20 WV #06: CYCLE;
 MLH 08/21/25

COMMENT TABLE 3

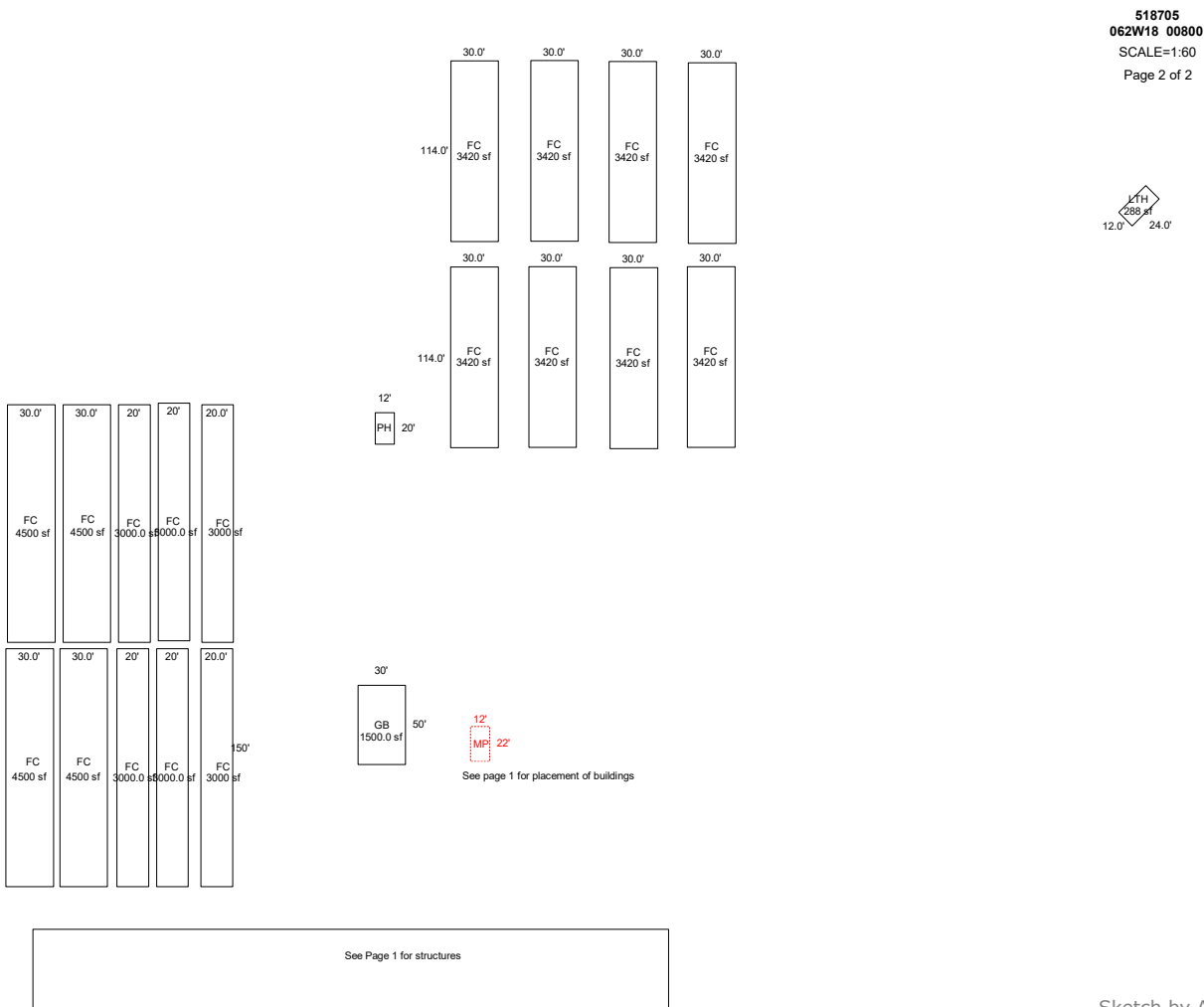
CLEAN UP L4

SKETCH/AREA TABLE ADDENDUM

SUBJECT INFO

File No.: 518705 Parcel No.: 062W18 00800
 Property Address: 3775 Brooklake Rd NE
 City: Salem County: State: Or ZipCode: 97303
 Owner:
 Client: Client Address:
 Appraiser Name: Inspection Date:

SKETCH



Sketch by ApexSketch

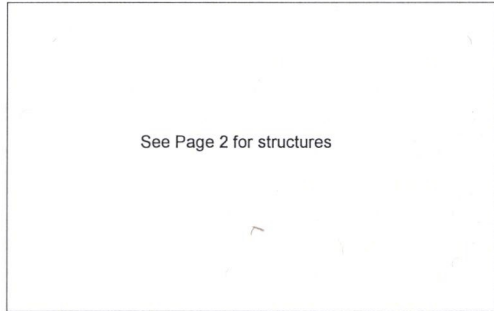
AREA CALCULATIONS SUMMARY						COMMENT TABLE 1				
Code	Description	Factor	Net Size	Perimeter	Net Totals					
GBA1	FC	1.0	3000.0	340.0		UPD BY PHU 07.08.20 UPDATED BY CLOBERG 01/20/26				
	MP	1.0	264.0	68.0						
	GB	1.0	1500.0	160.0						
	FC	1.0	3000.0	340.0						
	FC	1.0	3000.0	340.0						
	FC	1.0	3000.0	340.0						
	PH	1.0	240.0	64.0						
	FC	1.0	4500.0	360.0						
	FC	1.0	4500.0	360.0						
	FC	1.0	3000.0	340.0						
	FC	1.0	3000.0	340.0						
	FC	1.0	4500.0	360.0	38004.0					
	FC	FC	1.0	3420.0	288.0				COMMENT TABLE 2 05.12.20 WV #06: CYCLE; MLH 08/21/25	
		FC	1.0	3420.0	288.0					
FC		1.0	3420.0	288.0						
	6 addl items					COMMENT TABLE 3 CLEAN UP L4				
	Net LIVABLE	cnt	9 (rounded)		27,648					
	Net BUILDING	cnt	0 (rounded)		38,004					

SKETCH/AREA TABLE ADDENDUM

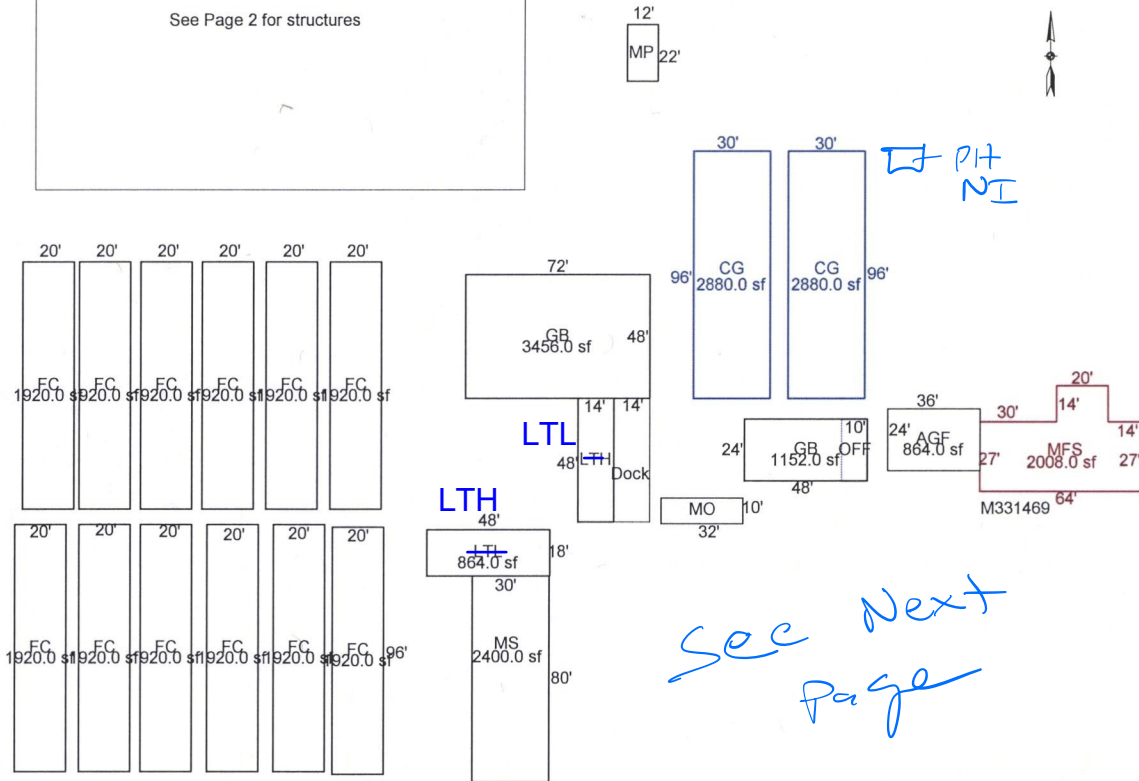
SUBJECT INFO

File No.: R18705 Parcel No.: 062W18 00800
 Property Address: 3775 Brooklake Rd NE
 City: Salem County: State: Or ZipCode: 97303
 Owner:
 Client: Client Address:
 Appraiser Name: Inspection Date:

SKETCH



R18705
 062W18 00800
 SCALE=1:60
 Page 1 of 2



Sketch by Apex Sketch

AREA CALCULATIONS SUMMARY

Code	Description	Factor	Net Size	Perimeter	Net Totals
GBA1	FC	1	1920	232	
	FC	1	1920	232	
	FC	1	1920	232	
	FC	1	1920	232	
	FC	1	1920	232	
	FC	1	1920	232	
	FC	1	1920	232	
	MP	1	264	68	
	MS	1	2400	220	
	LTL	1	864	132	
	LTH	1	672	124	
	FC	1	1920	232	
GB	1	3456	240		
CG	1	2880	252		
CG	1	2880	252		
FC	1	1920	232		
9 addl items					
	Net LIVABLE	cnt	2 (rounded)		2,328
	Net BUILDING	cnt	20 (rounded)		37,608

COMMENT TABLE 1

UPD BY PHU 07.08.20

COMMENT TABLE 2

05.12.20 WV #06: CYCLE;

8/21/25 MLH

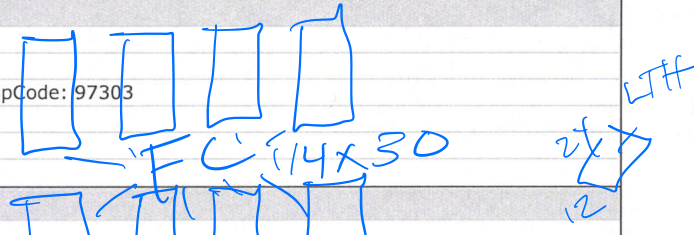
COMMENT TABLE 3

clean up LY

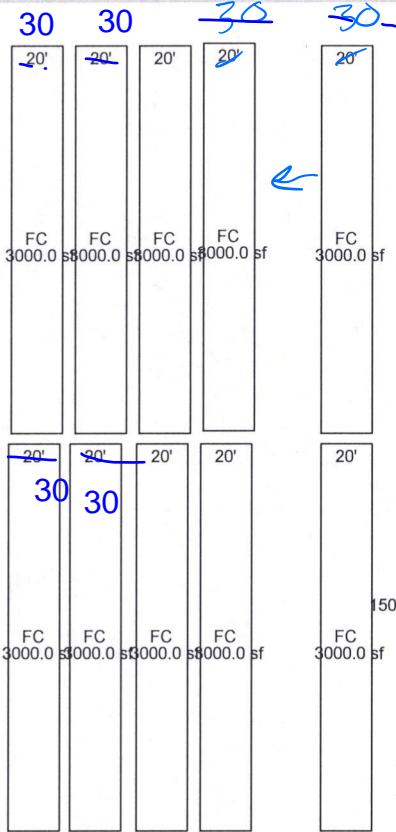
SKETCH/AREA TABLE ADDENDUM

SUBJECT INFO

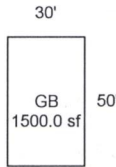
File No.: R18705 Parcel No.: 062W18 00800
 Property Address: 3775 Brooklake Rd NE
 City: Salem County: State: Or ZipCode: 97303
 Owner:
 Client: Client Address:
 Appraiser Name: Inspection Date:



SKETCH



R18705
 062W18 00800
 SCALE=1:60
 Page 2 of 2



See page 1 for placement of buildings

See Page 1 for structures

Sketch by Apex Sketch

AREA CALCULATIONS SUMMARY					COMMENT TABLE 1					
Code	Description	Factor	Net Size	Perimeter	Net Totals					
GBA1	FC	1	3000	340		UPD BY PHU 07.08.20 <div style="display: flex; justify-content: space-between;"> <div style="width: 45%;"> <table border="1" style="width: 100%; border-collapse: collapse;"> <thead> <tr> <th style="text-align: center;">COMMENT TABLE 2</th> <th style="text-align: center;">COMMENT TABLE 3</th> </tr> </thead> <tbody> <tr> <td style="width: 50%;">05.12.20 WV #06: CYCLE;</td> <td style="width: 50%;"></td> </tr> </tbody> </table> </div> </div>	COMMENT TABLE 2	COMMENT TABLE 3	05.12.20 WV #06: CYCLE;	
	COMMENT TABLE 2	COMMENT TABLE 3								
	05.12.20 WV #06: CYCLE;									
	FC	1	3000	340						
	FC	1	3000	340						
	FC	1	3000	340						
	FC	1	3000	340						
	FC	1	3000	340						
	FC	1	3000	340						
	FC	1	3000	340						
	FC	1	3000	340						
	FC	1	3000	340						
	PH	1	240	64						
GB	1	1500	160							
MP	1	264	68	32004						
Net BUILDING		cnt	13 (rounded)	32,004						