

# Rural Work Order Cover Sheet

RAM Transaction #: 610814

Year: 24 - 25

Account Numbers Involved: 101371 101373

Sequence #1: BOUNDARY LINE AGREEMENT WITH CONVEYANCE VERBIAGE PROCESSED AS LOT LINE ADJUSTMENT - SDB

Sequence #2: BOUNDARY LINE AGREEMENT WITH CONVEYANCE VERBIAGE PROCESSED AS LOT LINE ADJUSTMENT - SDB

	Check For:				Forms Included:	
	Yes	No		Yes	No	✓
Move Building Permits	<input type="checkbox"/>	<input checked="" type="checkbox"/>	Fire Patrol (Email Supervisor)	<input checked="" type="checkbox"/>	<input type="checkbox"/>	RAM Report <input checked="" type="checkbox"/>
Move Photos	<input type="checkbox"/>	<input checked="" type="checkbox"/>	Multi-Section	<input type="checkbox"/>	<input checked="" type="checkbox"/>	Processing Forms <input checked="" type="checkbox"/>
Update Apex	<input type="checkbox"/>	<input checked="" type="checkbox"/>	Tagged for 2 <sup>nd</sup> year Reset	<input type="checkbox"/>	<input checked="" type="checkbox"/>	Before and After Maps <input checked="" type="checkbox"/>
Update Account Notes	<input checked="" type="checkbox"/>	<input type="checkbox"/>	Exemptions	<input type="checkbox"/>	<input checked="" type="checkbox"/>	Multi-Section Processing Form <input type="checkbox"/>
PAT LIAB	<input checked="" type="checkbox"/>	<input type="checkbox"/>	Update Tracker	<input checked="" type="checkbox"/>	<input type="checkbox"/>	Calculation Form(s) <input type="checkbox"/>

Miscellaneous Notes: \_\_\_\_\_

Appraiser: MLH Date: 6/12/24

Appraisal Review: WW Date: 6/12/24

Data Entry: Chris Date: 6/17/24

Tax Yea	Account I	MTL	Transactio	Vouche	Recorded Date	Transaction Comment	Operation	Voucher Notes	Code	+/- Size	Size
2024	101371	061E250000400	610814	1	4/10/2024 14:40	BOUNDARY LINE AGREEMENT WITH CONVEYANCE VERBIAGE PROCESSED AS LOT LINE ADJUSTMENT - SDB	LOT LINE ADJUSTMENT - FROM	FROM 101371 TO 101373	4500	-0.09	A
2024	101373	061E250000500	610814	2	4/10/2024 14:40	BOUNDARY LINE AGREEMENT WITH CONVEYANCE VERBIAGE PROCESSED AS LOT LINE ADJUSTMENT - SDB	LOT LINE ADJUSTMENT - TO	FROM 101371 TO 101373	4500	0.09	A

# Rural Work Order Processing Form

One Page Per Account

Sequence #: 1 of 2 Account Number: 101371 MTL: 061E250000400 RAM Transaction ID: 610814

Type:  COM  LLA  PPT  SEG  SUB  AC  R of W  Vacate  Map Maintenance

## Account Details

Ma Sa Nh: 03 06 000 Prop Class: 581 RMV Class: 501

Assigned Appraiser: MLH Part of Unit: Yes  or No  Fire Patrol: Yes  or No

## Land Fragment

Account From	Code Area	Liab Yr	Land Class	LUC	Value Source	# of Acres	Zone	Land Adjustments
101371	04500	1970	FTLD	005	Designated Forest Land	7.29	REST	
101371	04500	1987	FTLD	005	Designated Forest Land	<b>10.91</b>	REST	
101371	04500	1977	FTLD	005	Designated Forest Land	2.00	REST	
101371	04500	1977	2HD	005	Farm Use EFU	7.60	REST	GSOIL
101371	04500	1977	4HD	005	Farm Use EFU	2.40	REST	
101371	04500	2009	2HD	005	Forest Homesite	1.00	REST	GSOIL
101371	04500		2HD	005	Rural Restrictive	9.54	REST	GSOIL
101371	04500				SA OSDF			

Total Acres: 40.74

## Improvements

Account From	Code Area	Imp ID	Stat Class	Description	Account From	Code Area	Imp ID	Stat Class	Description
NO CHANGES									

Adjustments: \_\_\_\_\_

## Exception

New MAV: \_\_\_\_\_  Sys Calc  No Change to MAV

# Rural Work Order Processing Form

One Page Per Account

Sequence #: 2 of 2 Account Number: 101373 MTL: 061E250000500 RAM Transaction ID: 610814

Type:  COM  LLA  PPT  SEG  SUB  AC  R of W  Vacate  Map Maintenance

## Account Details

Ma Sa Nh: 03 06 000 Prop Class: 581 RMV Class: 501  
 Assigned Appraiser: MLH Part of Unit: Yes  or No  Fire Patrol: Yes  or No

## Land Fragment

Account From	Code Area	Liab Yr	Land Class	LUC	Value Source	# of Acres	Zone	Land Adjustments
101371	04500	1987	FTLD	005	Designated Forest Land	0.09	REST	
101373	04500	2020	FTLD	005	Designated Forest Land	15.00	REST	
101373	04500	2020		005	Farm Homesite	1.00	REST	
101373	04500	2020	2HD	005	Farm Use EFU	5.13	RES	
101373	04500	2020	4HD	005	Farm Use EFU	1.07	REST	
101373	04500	2020	WOOD	005	Farm Use EFU	9.19	REST	
101373	04500				SA OSD A			

Total Acres: 31.48

## Improvements

Account From	Code Area	Imp ID	Stat Class	Description	Account From	Code Area	Imp ID	Stat Class	Description
NO CHANGES									

Adjustments: \_\_\_\_\_

## Exception

New MAV: \_\_\_\_\_  Sys Calc  No Change to MAV

06 1E 25

CLACKAMAS COUNTY

MARION COUNTY, OREGON  
SEC 25 T6S R1E W.M.  
SCALE 1" = 400'

LEGEND

- LINE TYPES**
- Taxlot Boundary
  - Road Right-of-Way
  - Railroad Right-of-Way
  - Private Road ROW
  - Subdivision/Plat Bndry
  - Waterline - Taxlot Bndry
  - Waterline - Non Bndry
  - Historical Boundary
  - Easement
  - Railroad Centerline
  - Trackcode Line
  - Map Boundary
- CORNER TYPES**
- + 1/16TH Section Cor.
  - ⊕ 1/4 Section Cor.
  - ⊙ D/LC Corner
  - 16 15 Section Corner
  - 21 22 Section Corner
- NUMBERS**
- Tax Code Number
  - 00 00 0
  - 00 00 0
- Acreage  
0.26 AC
- NOTES**
- Tick Marks: A tick mark in the road indicates that the labeled dimension extends into the public ROW

CANCELLED NUMBERS

DISCLAIMER: THIS MAP WAS PREPARED FOR ASSESSMENT PURPOSES ONLY



FOR ADDITIONAL MAPS VISIT OUR WEBSITE AT [www.co.marion.or.us](http://www.co.marion.or.us)

PLOT DATE: 10/16/2020

06 1E 25

06 1E 25

06 1E 25

SEE MAP 081E24

NOTE: REMAINDER OF THIS PARCEL IS ON MAP 081E24

1/4 COR

1/4 COR

1/4 COR

1/4 COR

1/4 COR

1/4 COR

1/4 COR

1/4 COR

1/4 COR

1/4 COR

1/4 COR

1/4 COR

1/4 COR

1/4 COR

1/4 COR

1/4 COR

1/4 COR

1/4 COR

1/4 COR

1/4 COR

1/4 COR

1/4 COR

1/4 COR

1/4 COR

1/4 COR

1/4 COR

1/4 COR

1/4 COR

1/4 COR

19

24

30

25

100

200

300

175.79 AC

400

101371

101373

400

600

500

23

24

26

25

66

67

68

69

70

71

72

73

74

75

76

77

78

79

80

81

82

83

84

85

86

87

88

89

90

91

92

93

94

95

14 COR

14 COR

14 COR

14 COR

14 COR

14 COR

14 COR

14 COR

14 COR

14 COR

14 COR

14 COR

14 COR

14 COR

14 COR

14 COR

14 COR

14 COR

14 COR

14 COR

14 COR

14 COR

14 COR

14 COR

14 COR

14 COR

14 COR

14 COR

14 COR

14 COR

14 COR

14 COR

14 COR

14 COR

14 COR

14 COR

14 COR

14 COR

14 COR

14 COR

14 COR

14 COR

14 COR

14 COR

14 COR

14 COR

14 COR

14 COR

14 COR

14 COR

14 COR

14 COR

14 COR

14 COR

14 COR

14 COR

14 COR

14 COR

14 COR

14 COR

14 COR

14 COR

14 COR

14 COR

14 COR

14 COR

14 COR

14 COR

14 COR

14 COR

14 COR

14 COR

14 COR

14 COR

14 COR

14 COR

14 COR

14 COR

14 COR

14 COR

14 COR

14 COR

14 COR

14 COR

14 COR

14 COR

14 COR

14 COR

14 COR

14 COR

14 COR

14 COR

14 COR

14 COR

14 COR

14 COR

14 COR

14 COR

14 COR

14 COR

14 COR

14 COR

14 COR

14 COR

14 COR

14 COR

14 COR

14 COR

14 COR

14 COR

14 COR

14 COR

14 COR

14 COR

14 COR

14 COR

14 COR

14 COR

14 COR

14 COR

14 COR

14 COR

14 COR

14 COR

14 COR

14 COR

14 COR

14 COR

14 COR

14 COR

14 COR

14 COR

14 COR

14 COR

14 COR

14 COR

14 COR

14 COR

14 COR

14 COR

14 COR

14 COR

14 COR

14 COR

14 COR

14 COR

14 COR

14 COR

14 COR

14 COR

14 COR

14 COR

14 COR

14 COR

14 COR

14 COR

14 COR

14 COR

14 COR

14 COR

14 COR

14 COR

14 COR

14 COR

14 COR

14 COR

14 COR

14 COR

14 COR

14 COR

14 COR

14 COR

14 COR

14 COR

14 COR

14 COR

14 COR

14 COR

14 COR

14 COR

14 COR

14 COR

14 COR

14 COR

14 COR

14 COR

14 COR

14 COR

14 COR

14 COR

14 COR

14 COR

14 COR

14 COR

14 COR

14 COR

14 COR

14 COR

14 COR

14 COR

14 COR

14 COR

14 COR

14 COR

14 COR

14 COR

14 COR

14 COR

14 COR

14 COR

14 COR

14 COR

14 COR

14 COR

14 COR

14 COR

14 COR

14 COR

14 COR

14 COR

14 COR

14 COR

14 COR

14 COR

14 COR

14 COR

14 COR

14 COR

14 COR

06 1E 25

CLACKAMAS COUNTY

MARION COUNTY, OREGON  
SEC 25 T6S R1E W.M.  
SCALE 1" = 400'

LEGEND

- LINE TYPES**
- Taxlot Boundary
  - Road Right-of-Way
  - Railroad Right-of-Way
  - Private Road ROW
  - Subdivision/Plat Bndry
  - Waterline - Taxlot Bndry
  - Waterline - Non Bndry
  - Historical Boundary
  - Easement
  - Railroad Centreline
  - Taxcode Line
  - Map Boundary
- CORNER TYPES**
- + 1/16TH Section Cor.
  - ⊙ D1C Corner
  - ⊕ 1/4 Section Cor.
  - ⊕ 16 15 Section Corner
  - ⊕ 21 22 Section Corner
- NUMBERS**
- Tax Code Number  
00 00 0
- Acres  
0.25 AC
- NOTES**
- Tick Marks: A tick mark in the road indicates that the labeled dimension extends into the public ROW

CANCELLED NUMBERS

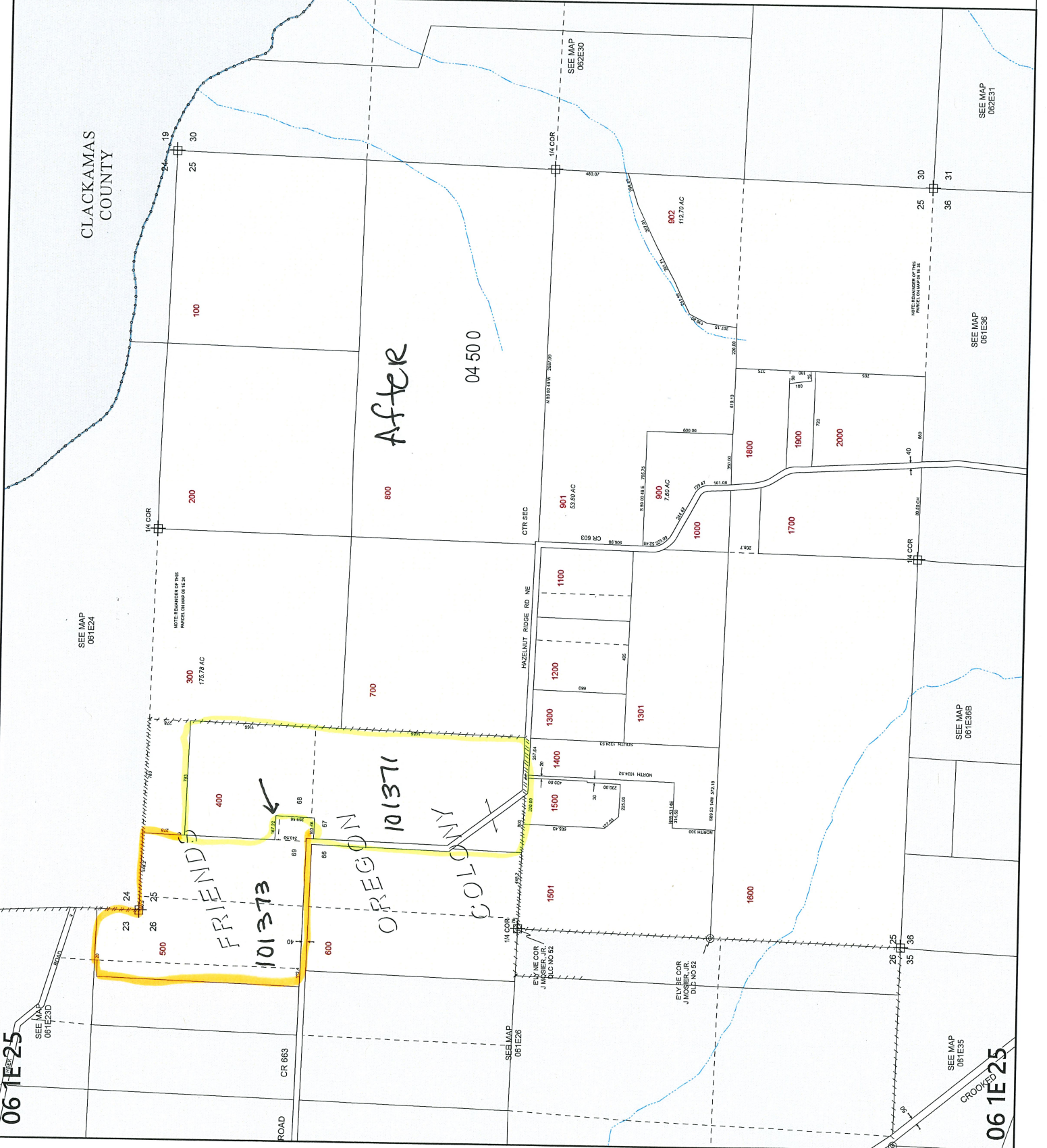
DISCLAIMER: THIS MAP WAS PREPARED FOR ASSESSMENT PURPOSES ONLY



FOR ADDITIONAL MAPS VISIT OUR WEBSITE AT [www.co.marion.or.us](http://www.co.marion.or.us)

PLOT DATE: 6/5/2024

06 1E 25



06 1E 25

06 1E 25

CROOKED