

Recorded/Effect

Tax Year Account ID Transactor Voucher Serial Date Operation Voucher Notes +/- Size

2023 511989 448863 1 1/17/2023 0:00 SIZE CHANGE AC CORRECTION PRIOR TO LOT LINE ADJUSTMENT -0.17

2023 511977 448863 2 1/17/2023 0:00 SIZE CHANGE AC CORRECTION PRIOR TO LOT LINE ADJUSTMENT -2.31

2023 511989 448863 3 1/17/2023 0:00 FROM LOT LINE ADJUSTMENT - FROM 511989 TO 511977 -60.94

2023 511977 448863 4 1/17/2023 0:00 TO LOT LINE ADJUSTMENT - FROM 511989 TO 511977 60.94

INPUT WW
7/19/23

Rural Work Order

One Account Land Change

REQ # 1

RAM Transaction ID: 448863

Farm or Forest: Yes No

Tax Year: 23/24

LAND				MAV			NEW MAV	
Property ID# <u>511989</u>				<input type="checkbox"/>	Balance			
				<input checked="" type="checkbox"/>	No Change			
				<input type="checkbox"/>	Reset			
Total Acres	MA/SA/NH	Map-Taxlot	Prop Class	RMV Class				
<u>141.04</u>	<u>02/06/000</u>	<u>42W160000400</u>	<u>551</u>	551 <u>501</u>				
From Acct	Code Area	Zone	Size	Value Source	Liab YR	SOIL	LUC	Adjustments
<u>511989</u>	<u>45570</u>	<u>Rest</u>	<u>1.0</u>	<u>Market Homesite</u>		<u>2BI</u>	<u>005</u>	<u>GSOIL</u>
<u>511989</u>	<u>45570</u>	<u>Rest</u>	<u>112.83</u>	<u>Farm Use - EFU</u>	<u>1980</u>	<u>2BI</u>	<u>005</u>	<u>GSOIL, IRR</u>
<u>511989</u>	<u>45570</u>	<u>Rest</u>	<u>21</u>	<u>Farm Use - EFU</u>	<u>1980</u>	<u>4BI</u>	<u>005</u>	<u>IRR</u>
<u>511989</u>	<u>45570</u>	<u>Rest</u>	<u>6.21</u>	<u>Farm Use - EFU</u> <u>Water</u>	<u>1980</u>	<u>2BD</u> <u>WST</u>	<u>005</u>	<u>WASTE (WET/RIVER)</u>

Comments:

AC CORRECTION PRIOR TO LOT LINE ADJUSTMENT -0.17

	Yes	/	No
Building Permit Move:	<input type="checkbox"/>		<input checked="" type="checkbox"/>
Photo Move:	<input type="checkbox"/>		<input checked="" type="checkbox"/>
Apex Change:	<input type="checkbox"/>		<input checked="" type="checkbox"/>

Completed By	INT	Date
Appraiser:	<u>JS</u>	<u>7/12/2023</u>
Appr. Review:	<u>WW</u>	<u>7/19/2023</u>
Clerk	<u>CWO</u>	<u>8/9/23</u>

Rural Work Order

One Account Land Change

SEQ # 2

KAM Transaction ID: 448863

Farm or Forest: Yes No

Tax Year: 23/24

<u>LAND</u>					<u>MAV</u>			<u>NEW MAV</u>
Property ID# <u>511977</u>					<input type="checkbox"/>	Balance		_____
					<input checked="" type="checkbox"/>	No Change		_____
					<input type="checkbox"/>	Reset		_____
Total Acres	MA/SA/NH	Map-Taxlot	Prop Class	RMV Class				
<u>97.6</u>	<u>02/06/000</u>	<u>42W160000400</u>	<u>551</u>	551 <u>501</u>				
From Acct	Code Area	Zone	Size	Value Source	Liab YR	SOIL	LUC	Adjustments
<u>511977</u>	<u>45570</u>	<u>Rest</u>	<u>1.0</u>	<u>Market Homesite</u>	_____	<u>6B</u>	<u>005</u>	<u>FSOIL</u>
<u>511977</u>	<u>45570</u>	<u>Rest</u>	<u>80.6</u>	<u>Farm Use - EFU</u>	<u>1980</u>	<u>2BI</u>	<u>005</u>	<u>GSOIL, IRR.</u>
<u>511977</u>	<u>45570</u>	<u>Rest</u>	<u>4</u>	<u>Woodlot</u>	<u>1980</u>	<u>2BI</u>	<u>005</u>	<u>GSOIL, IRR</u>
<u>511977</u>	<u>45570</u>	<u>Rest</u>	<u>12</u>	<u>Farm Use - EFU</u>	<u>1980</u>	<u>4BI</u>	<u>005</u>	<u>IRR</u>

Comments:

AC CORRECTION PRIOR TO LOT LINE ADJUSTMENT -2.31

	Yes	/	No
Building Permit Move:	<input type="checkbox"/>	/	<input checked="" type="checkbox"/>
Photo Move:	<input type="checkbox"/>	/	<input checked="" type="checkbox"/>
Apex Change:	<input type="checkbox"/>	/	<input checked="" type="checkbox"/>

Completed By	INT	Date
Appraiser:	<u>JS</u>	<u>7/12/2023</u>
Appr. Review:	<u>WW</u>	<u>7/19/2023</u>
Clerk	<u>cwo</u>	<u>8/9/23</u>

Rural Work Order

Multi Account Land Changes Only

SEQ # 3-4

RAM Transaction ID: 448863

Farm or Forest: Yes No

Tax Year: 23-24

Account numbers to be cancelled: _____

<u>LAND</u>					<u>MAV</u>		<u>NEW MAV</u>	
Property ID#	Giving / Receiving		Second Yr Reset*		<input type="checkbox"/>	Balance		
<u>511989</u>	<u>GIVING</u>				<input checked="" type="checkbox"/>	No Change		
					<input type="checkbox"/>	Reset		
Total Acres	MA/SA/NH	Map-Taxlot	Prop Class	RMV Class				
<u>80.1</u>	<u>02/06/000</u>	<u>42W160000400</u>	<u>551</u>	551 <u>501</u>				
From Acct	Code Area	Zone	Size	Value Source	Liab YR	SOIL	LUC	Adjustments
<u>511989</u>	<u>45570</u>	<u>Rest</u>	<u>1</u>	<u>Market Homesite</u>		<u>2BI</u>	<u>005</u>	<u>GSOIL</u>
<u>511989</u>	<u>45570</u>	<u>Rest</u>	<u>60.93</u>	<u>Farm Use - EFU</u>	<u>1980</u>	<u>2BI</u>	<u>005</u>	<u>GSOIL, IRR</u>
<u>511989</u>	<u>45570</u>	<u>Rest</u>	<u>11.96</u>	<u>Farm Use - EFU</u>	<u>1980</u>	<u>4BI</u>	<u>005</u>	<u>IRR</u>
<u>511989</u>	<u>45570</u>	<u>Rest</u>	<u>6.21</u>	<u>Farm Use - EFU</u>	<u>1980</u>	2BI <u>WST</u>	<u>005</u>	<u>WASTE (WET/RIVER)</u>
				<u>Water</u>		<u>WST</u>		

<u>LAND</u>					<u>MAV</u>		<u>NEW MAV</u>	
Property ID#	Giving / Receiving		Second Yr Reset*		<input type="checkbox"/>	Balance		
<u>511977</u>	<u>RECEIVING</u>				<input checked="" type="checkbox"/>	No Change		
					<input type="checkbox"/>	Reset		
Total Acres	MA/SA/NH	Map-Taxlot	Prop Class	RMV Class				
<u>158.54</u>	<u>02/06/000</u>	<u>42W160000400</u>	<u>551</u>	551 <u>501</u>				
From Acct	Code Area	Zone	Size	Value Source	Liab YR	SOIL	LUC	Adjustments
<u>511977</u>	<u>45570</u>	<u>Rest</u>	<u>1</u>	<u>Market Homesite</u>		<u>6B</u>	<u>005</u>	<u>FSOIL</u>
<u>511977</u>	<u>45570</u>	<u>Rest</u>	<u>80.60</u>	<u>Farm Use - EFU</u>	<u>1980</u>	<u>2BI</u>	<u>005</u>	<u>GSOIL, IRR</u>
<u>511977</u>	<u>45570</u>	<u>Rest</u>	<u>4</u>	<u>Woodlot</u>	<u>1980</u>	<u>2BI</u>	<u>005</u>	<u>GSOIL</u>
<u>511977</u>	<u>45570</u>	<u>Rest</u>	<u>12</u>	<u>Farm Use - EFU</u>	<u>1980</u>	<u>4BI</u>	<u>005</u>	<u>IRR</u>
<u>511989</u>	<u>45570</u>	<u>Rest</u>	<u>51.9</u>	<u>Farm Use - EFU</u>	<u>1980</u>	<u>2BI</u>	<u>005</u>	<u>GSOIL, IRR</u>
<u>511989</u>	<u>45570</u>	<u>Rest</u>	<u>9.04</u>	<u>Farm Use - EFU</u>	<u>1980</u>	<u>4BI</u>	<u>005</u>	<u>IRR</u>

Comments:

LOT LINE ADJUSTMENT BY DEED PER MARION COUNTY PLANNING CASE # 22-045 - FROM 511989 60.94 ACRES TO 511977 (LAND MOVING ALL SA NO MAV TO MOVE)

Building Permit Move:	Yes	/	No	
	<input type="checkbox"/>	/	<input checked="" type="checkbox"/>	
Photo Move:	<input type="checkbox"/>	/	<input checked="" type="checkbox"/>	
Apex Change:	<input type="checkbox"/>	/	<input checked="" type="checkbox"/>	

Completed By	INT	Date
Appraiser:	JS	<u>7/12/2023</u>
Appr. Review:	WW	<u>7/19/2023</u>
Clerk	<u>Cwo</u>	<u>8/9/23</u>

B4 511977

Account 511977 Year 2022 Map 042W160000300

Owner BRENTANO AG ENTERPRISES LLC Situs 5674 BUYSERIE RD NE SAINT PAUL OR 97137

Land Summary

Overall Land Class Overall RMV Land Use Code Overall SAV Land Use Code

Land Fragments

ID	Code Area	Description	Size	Land Class	LUC	RMV	MAV	SAV	MSAV	SAV LUC	Fire Distri
1	45570	Market Homesite	1.00 Acres		005	\$14,110	\$9,010	\$	\$		
2	45570	Farm Use - EFU	82.91 Acres	2BI	005	\$1,299,400	\$	\$355,377	\$132,394	011	
3	45570	Woodlot	4.00 Acres	WOOD	005	\$58,510	\$	\$2,447	\$1,530	011	
4	45570	Farm Use - EFU	12.00 Acres	4BI	005	\$175,530	\$	\$44,086	\$17,848	011	
Total Sqft 0			Total Acres 99.91	Total RMV \$1,547,550		Total MAV \$9,010	Total SAV \$401,910		Total MSAV \$151,772		

511989

Account 511989 Year 2022 Map 042W160000400

Owner 5404 BUYSERIE ROAD LLC Situs 5404 BUYSERIE RD NE SAINT PAUL OR 97137

Land Summary

Overall Land Class Overall RMV Land Use Code Overall SAV Land Use Code

Land Fragments

ID	Code Area	Description	Size	Land Class	LUC	RMV	MAV	SAV	MSAV	SAV LUC	Fire Distri
2	45570	Market Homesite	1.00 Acres		005	\$14,110	\$28,540	\$	\$		
	45570	Farm Use - EFU	113.00 Acres	2BI	005	\$1,771,010	\$	\$484,352	\$180,442	011	
4	45570	Farm Use - EFU	21.00 Acres	4BI	005	\$307,190	\$	\$77,152	\$31,234	011	
5	45570	Farm Use - EFU	6.21 Acres	WST	005	\$24,660	\$	\$1,626	\$661	011	
Total Sqft 0			Total Acres 141.21	Total RMV \$2,116,970		Total MAV \$28,540	Total SAV \$563,130		Total MSAV \$212,337		

AFTER SEQ 1 511989

Account 511989 Year 2022 Map 042W160000400

Owner 5404 BUYSERIE ROAD LLC Situs 5404 BUYSERIE RD NE SAINT PAUL OR 97137

Land Summary

Overall Land Class Overall RMV Land Use Code Overall SAV Land Use Code

Land Fragments

ID	Code Area	Description	Size	Land Class	LUC	RMV	MAV	SAV	MSAV	SAV LUC	Fire Distri
2	45570	Market Homesite	1.00 Acres		005	\$14,110	\$28,540	\$	\$		
3	45570	Farm Use - EFU	112.83 Acres	2BI	005	\$1,768,540	\$	\$483,624	\$180,171	011	
4	45570	Farm Use - EFU	21.00 Acres	4BI	005	\$307,220	\$	\$77,152	\$31,234	011	
5	45570	Farm Use - EFU	6.21 Acres	WST	005	\$24,660	\$	\$1,626	\$661	011	
Total Sqft 0			Total Acres 141.04	Total RMV \$2,114,530		Total MAV \$28,540	Total SAV \$562,402		Total MSAV \$212,066		

On-Site Developments

Code Area	Description	RMV	MAV	SAV	MSAV
45570	MKTA - OSD - AVERAGE	\$40,000	\$80,900	\$	\$
		\$40,000	\$80,900	\$	\$

AFTER SEQ 2 511977

Account 511977 Year 2022 Map 042W160000300

Owner BRENTANO AG ENTERPRISES LLC Situs 5674 BUYSERIE RD NE SAINT PAUL OR 97137

Land Summary

Overall Land Class Overall RMV Land Use Code Overall SAV Land Use Code

Land Fragments

ID	Code Area	Description	Size	Land Class	LUC	RMV	MAV	SAV	MSAV	SAV LUC	Fire I
1	45570	Market Homesite	1.00 Acres		005	\$14,130	\$9,010	\$	\$		
2	45570	Farm Use - EFU	80.60 Acres	2BI	005	\$1,265,350	\$	\$345,476	\$128,705	011	
3	45570	Woodlot	4.00 Acres	WOOD	005	\$58,610	\$	\$2,447	\$1,530	011	
4	45570	Farm Use - EFU	12.00 Acres	4BI	005	\$175,830	\$	\$44,086	\$17,848	011	
Total Sqft 0		Total Acres 97.60	Total RMV \$1,513,920	Total MAV \$9,010	Total SAV \$392,009	Total MSAV \$148,083					

On-Site Developments

AFTER SEQ 3-4 LLA

Account 511989 Year 2022 Map 042W160000400

Owner 5404 BUYSERIE ROAD LLC Situs 5404 BUYSERIE RD NE SAINT PAUL OR 97137

Land Summary

Overall Land Class Overall RMV Land Use Code Overall SAV Land Use Code

Land Fragments

ID	Code Area	Description	Size	Land Class	LUC	RMV	MAV	SAV	MSAV	SAV LUC	Fire Di
2	45570	Market Homesite	1.00 Acres		005	\$14,130	\$28,540	\$	\$		
3	45570	Farm Use - EFU	60.93 Acres	2BI	005	\$956,550	\$	\$261,164	\$97,295	011	
4	45570	Farm Use - EFU	11.96 Acres	4BI	005	\$175,250	\$	\$43,939	\$17,788	011	
5	45570	Farm Use - EFU	6.21 Acres	WST	005	\$24,700	\$	\$1,626	\$661	011	
Total Sqft 0		Total Acres 80.10	Total RMV \$1,170,630	Total MAV \$28,540	Total SAV \$306,729	Total MSAV \$115,744					

On-Site Developments

Code Area	Description	RMV	MAV	SAV	MSAV
45570	MKTA - OSD - AVERAGE	\$40,000	\$80,900	\$	\$
		\$40,000	\$80,900	\$	\$

Account 511977 Year 2022 Map 042W160000300

Owner BRENTANO AG ENTERPRISES LLC Situs 5674 BUYSERIE RD NE SAINT PAUL OR 97137

Land Summary

Overall Land Class Overall RMV Land Use Code Overall SAV Land Use Code

Land Fragments

ID	Code Area	Description	Size	Land Class	LUC	RMV	MAV	SAV	MSAV	SAV LUC	Fire District	Fire Pa
1	45570	Market Homesite	1.00 Acres		005	\$14,130	\$9,010	\$	\$			
2	45570	Farm Use - EFU	80.60 Acres	2BI	005	\$1,265,350	\$	\$345,476	\$128,705	011		
3	45570	Woodlot	4.00 Acres	WOOD	005	\$58,610	\$	\$2,447	\$1,530	011		
4	45570	Farm Use - EFU	12.00 Acres	4BI	005	\$175,830	\$	\$44,086	\$17,848	011		
5	45570	Farm Use - EFU	51.90 Acres	2BI	005	\$543,190	\$	\$222,459	\$82,876	011		
6	45570	Farm Use - EFU	9.04 Acres	4BI	005	\$94,610	\$	\$33,212	\$13,445	011		
Total Sqft 0		Total Acres 158.54	Total RMV \$2,151,720	Total MAV \$9,010	Total SAV \$647,680	Total MSAV \$244,404						

Effective Date 17-Jan-2023 12:00 AM Transaction ID 448863 Entry Date 09-Mar-2023 Recorded Date 17-Jan-2023 Sale Date
 AC CORRECTION & LOT LINE ADJUSTMENT - SDB

Seq	Voucher ID	Tax Year	Document Source	Type	ID #1	ID #2	PID	Source ID	PT	Operation	To/From Map
2	520440	2023	CLERK	LLAD	2023	1751	1	46830241		SIZE CHANGE	

AC CORRECTION PRIOR TO LOT LINE ADJUSTMENT

Size Changes	Code	+/- Size	Alternate Size	Code Area Deleted	Move to Acct	Move to Code
	45570	-2.31 Acres	0			
Size Totals	Code	Acres	Sqft	Alternate Size		
	45570	97.6				

7/11/2023 4:33:22 PM

Page 5 of 6

MARION COUNTY ASSESSOR'S
 NAME LEDGER

Account ID	Township	Range	Section	1/4	1/16	Taxlot	Special Interest		
511977	04	2W	16	0	0	00300			
4	520447	2023	CLERK	LLAD	2023	1751	1	46830241	LOT LINE ADJUSTMENT - 042W160000400 TO

LOT LINE ADJUSTMENT BY DEED PER MARION COUNTY PLANNING CASE # 22-045 - FROM 511989 TO 511977

Size Changes	Code	+/- Size	Alternate Size	Code Area Deleted	Move to Acct	Move to Code
	45570	60.94 Acres	0			
Size Totals	Code	Acres	Sqft	Alternate Size		
	45570	158.54				

Effective Date 17-Jan-2023 12:00 AM Transaction ID 448863 Entry Date 09-Mar-2023 Recorded Date 17-Jan-2023 Sale Date
 AC CORRECTION & LOT LINE ADJUSTMENT - SDB

Seq	Voucher ID	Tax Year	Document Source	Type	ID #1	ID #2	PID	Source ID	PT	Operation	To/From Map
-----	------------	----------	-----------------	------	-------	-------	-----	-----------	----	-----------	-------------

7/11/2023 4:35:00 PM

Page 4 of 6

MARION COUNTY ASSESSOR'S
 NAME LEDGER

Account ID	Township	Range	Section	1/4	1/16	Taxlot	Special Interest		
511989	04	2W	16	0	0	00400			
1	520437	2023	CLERK	LLAD	2023	1751	1	46830241	SIZE CHANGE

AC CORRECTION PRIOR TO LOT LINE ADJUSTMENT

Size Changes	Code	+/- Size	Alternate Size	Code Area Deleted	Move to Acct	Move to Code
	45570	-0.17 Acres	0			
Size Totals	Code	Acres	Sqft	Alternate Size		
	45570	141.04				

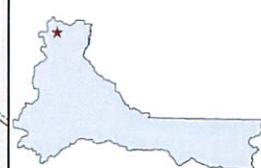
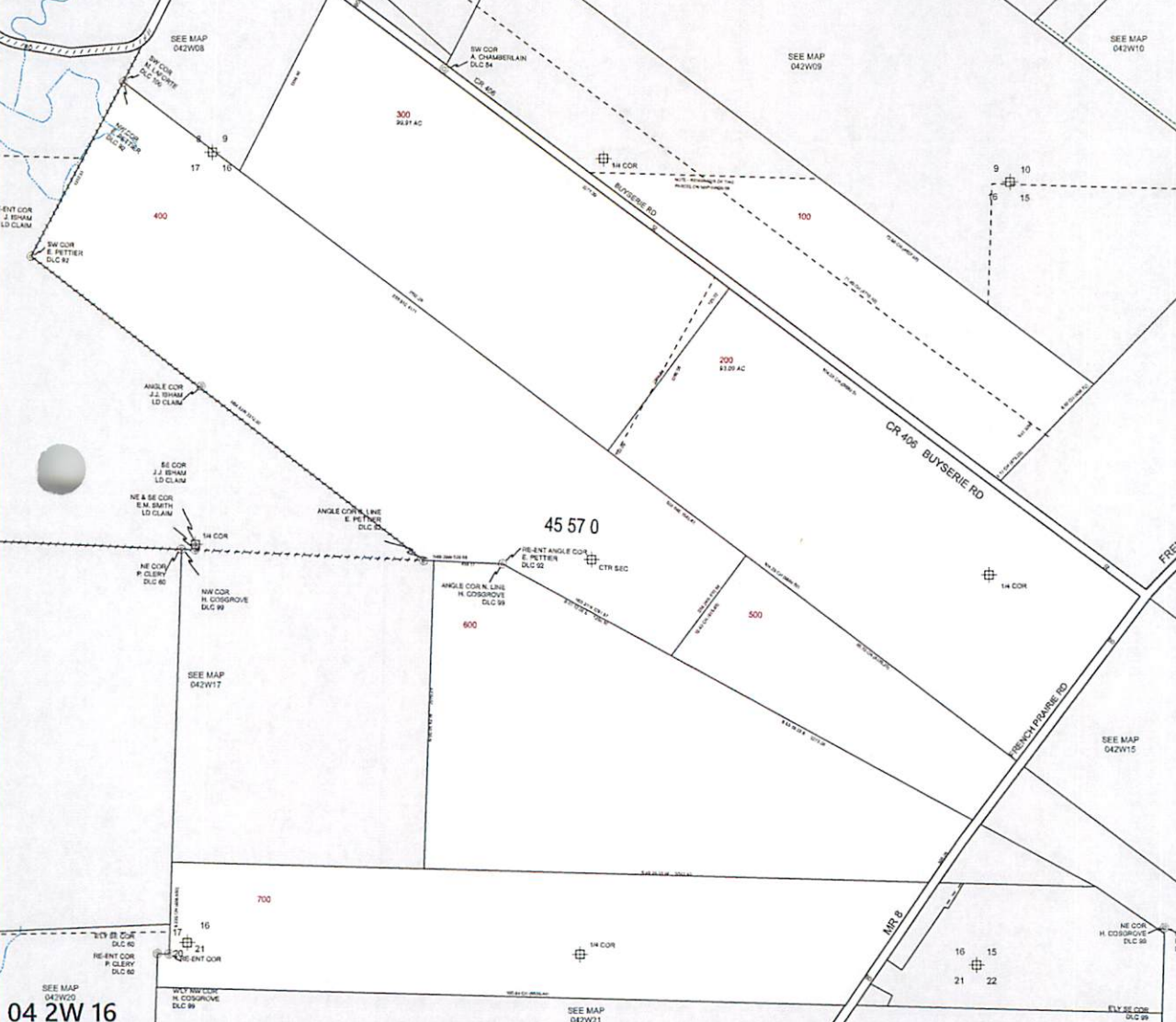
3	520443	2023	CLERK	LLAD	2023	1751	1	46830241	LOT LINE ADJUSTMENT - FROM
---	--------	------	-------	------	------	------	---	----------	----------------------------

LOT LINE ADJUSTMENT BY DEED PER MARION COUNTY PLANNING CASE # 22-045 - FROM 511989 TO 511977

Size Changes	Code	+/- Size	Alternate Size	Code Area Deleted	Move to Acct	Move to Code
	45570	-60.94 Acres	0			
Size Totals	Code	Acres	Sqft	Alternate Size		
	45570	80.1				

04 2W 16

04 2W 16



MARION COUNTY, OREGON
 SEC 16 T4S R2W W.M.
 SCALE 1" = 400'

- LEGEND**
- LINE TYPES**
- Taxlot Boundary
 - Road Right-of-Way
 - Railroad Right-of-Way
 - Private Road ROW
 - Subdivision/Plot Boundary
 - Waterline - Taxlot Bndry
 - Historical Boundary
 - Easement
 - Railroad Centerline
 - Taxroad Line
 - Map Boundary
 - Waterline - Non Bndry

- CORNER TYPES**
- 1/16th Section Cor
 - D/C Corner
 - 1/4 Section Cor
 - 16/15 Section Corner
 - 21/22

NUMBERS
 Tax Code Number
00 00 0

Acreage: 848 AC All acres listed per Acre, including any portions of the taxlot within public ROW

NOTES
 Tick Marks: A tick mark in the road indicates that the labeled dimension extends into the public ROW

CANCELLED NUMBERS

DISCLAIMER: THIS MAP WAS PREPARED FOR ASSESSMENT PURPOSES ONLY



FOR ADDITIONAL MAPS VISIT OUR WEBSITE AT www.co.marion.or.us

PLOT DATE: 10/16/2020

04 2W 16

04 2W 16

SEE MAP 042W21

SEE MAP 042W15

SEE MAP 042W17

SEE MAP 042W08

SEE MAP 042W10

SEE MAP 042W09

SEE MAP 042W11

SEE MAP 042W12

SEE MAP 042W13

SEE MAP 042W14

SEE MAP 042W16

SEE MAP 042W17

SEE MAP 042W18

SEE MAP 042W19

SEE MAP 042W20

SEE MAP 042W21

SEE MAP 042W22

SEE MAP 042W23

SEE MAP 042W24

SEE MAP 042W25

SEE MAP 042W26

SEE MAP 042W27

SEE MAP 042W28

SEE MAP 042W29

SEE MAP 042W30

SEE MAP 042W31

SEE MAP 042W32

SEE MAP 042W33

SEE MAP 042W34

SEE MAP 042W35

SEE MAP 042W36

SEE MAP 042W37

SEE MAP 042W38

SEE MAP 042W39

SEE MAP 042W40

SEE MAP 042W41

SEE MAP 042W42

SEE MAP 042W43

SEE MAP 042W44

SEE MAP 042W45

SEE MAP 042W46

SEE MAP 042W47

SEE MAP 042W48

SEE MAP 042W49

SEE MAP 042W50

SEE MAP 042W51

SEE MAP 042W52

SEE MAP 042W53

SEE MAP 042W54

SEE MAP 042W55

SEE MAP 042W56

SEE MAP 042W57

SEE MAP 042W58

SEE MAP 042W59

SEE MAP 042W60

SEE MAP 042W61

SEE MAP 042W62

SEE MAP 042W63

SEE MAP 042W64

SEE MAP 042W65

SEE MAP 042W66

SEE MAP 042W67

SEE MAP 042W68

SEE MAP 042W69

SEE MAP 042W70

SEE MAP 042W71

SEE MAP 042W72

SEE MAP 042W73

SEE MAP 042W74

SEE MAP 042W75

SEE MAP 042W76

SEE MAP 042W77

SEE MAP 042W78

SEE MAP 042W79

SEE MAP 042W80

SEE MAP 042W81

SEE MAP 042W82

SEE MAP 042W83

SEE MAP 042W84

SEE MAP 042W85

SEE MAP 042W86

SEE MAP 042W87

SEE MAP 042W88

SEE MAP 042W89

SEE MAP 042W90

SEE MAP 042W91

SEE MAP 042W92

SEE MAP 042W93

SEE MAP 042W94

SEE MAP 042W95

SEE MAP 042W96

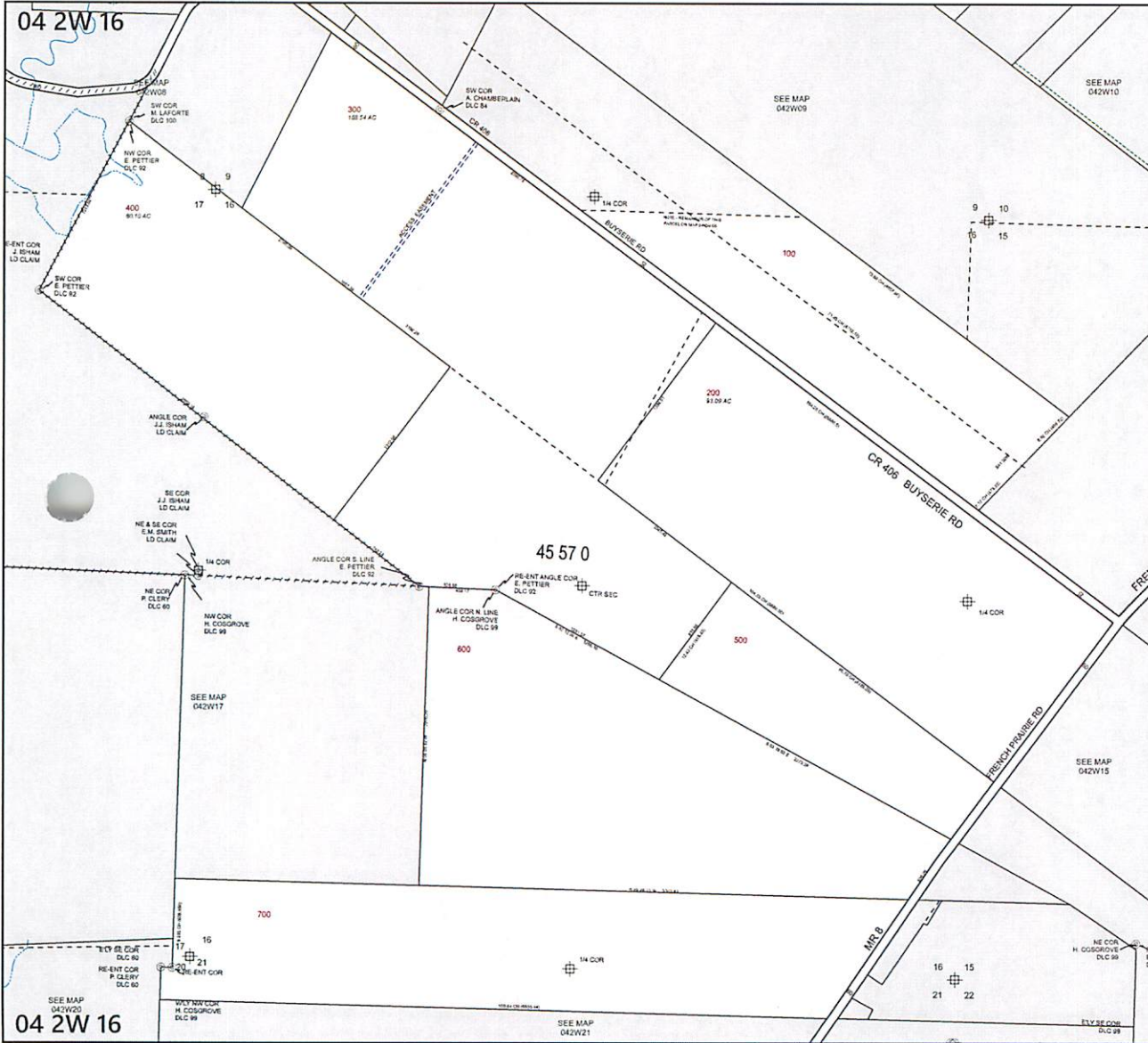
SEE MAP 042W97

SEE MAP 042W98

SEE MAP 042W99

SEE MAP 042W00

04 2W 16



04 2W 16



MARION COUNTY, OREGON
 SEC 16 T4S R2W W.M.
 SCALE 1" = 400'

LEGEND

- LINE TYPES
- Taxlot Boundary
 - Road Right-of-Way
 - Railroad Right-of-Way
 - Private Road ROW
 - Subdivision/Plot Boundary
 - Waterline - Taxlot Boundary
 - Historical Boundary
 - Easement
 - Railroad Centerline
 - Taxlot Line
 - Map Boundary
 - Waterline - Non Striky

- CORNER TYPES
- 1/16th Section Cor
 - DLC Corner
 - 1/4 Section Cor
 - 1/8 Section Corner
 - 1/16 Section Corner

NUMBERS
 Tax Code Number
 00 00 0

Abseces All acres listed are Net Acres, excluding any portions of the taxlot within public ROWs

NOTES
 Tick Marks: A tick mark in the road indicates that the labeled easement extends into the public ROW

CANCELLED NUMBERS

--	--	--	--

DISCLAIMER: THIS MAP WAS PREPARED FOR ASSESSMENT PURPOSES ONLY

Assessors Office
 Cartography Dept

FOR ADDITIONAL MAPS VISIT OUR WEBSITE AT
www.co.marion.or.us

PLOT DATE: 4/25/2023

04 2W 16