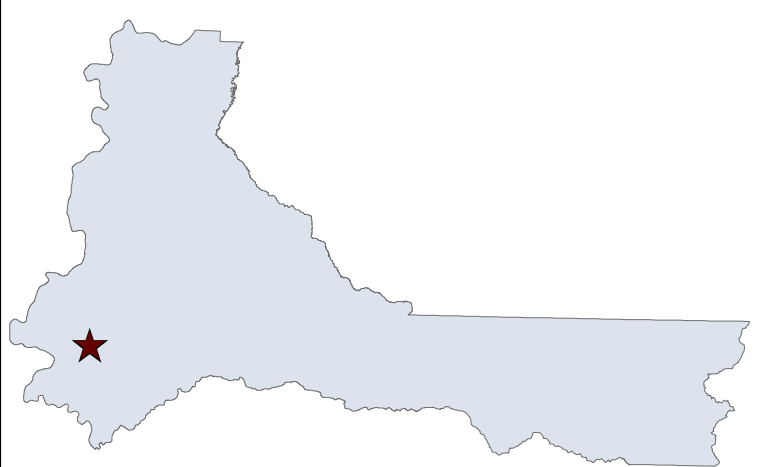
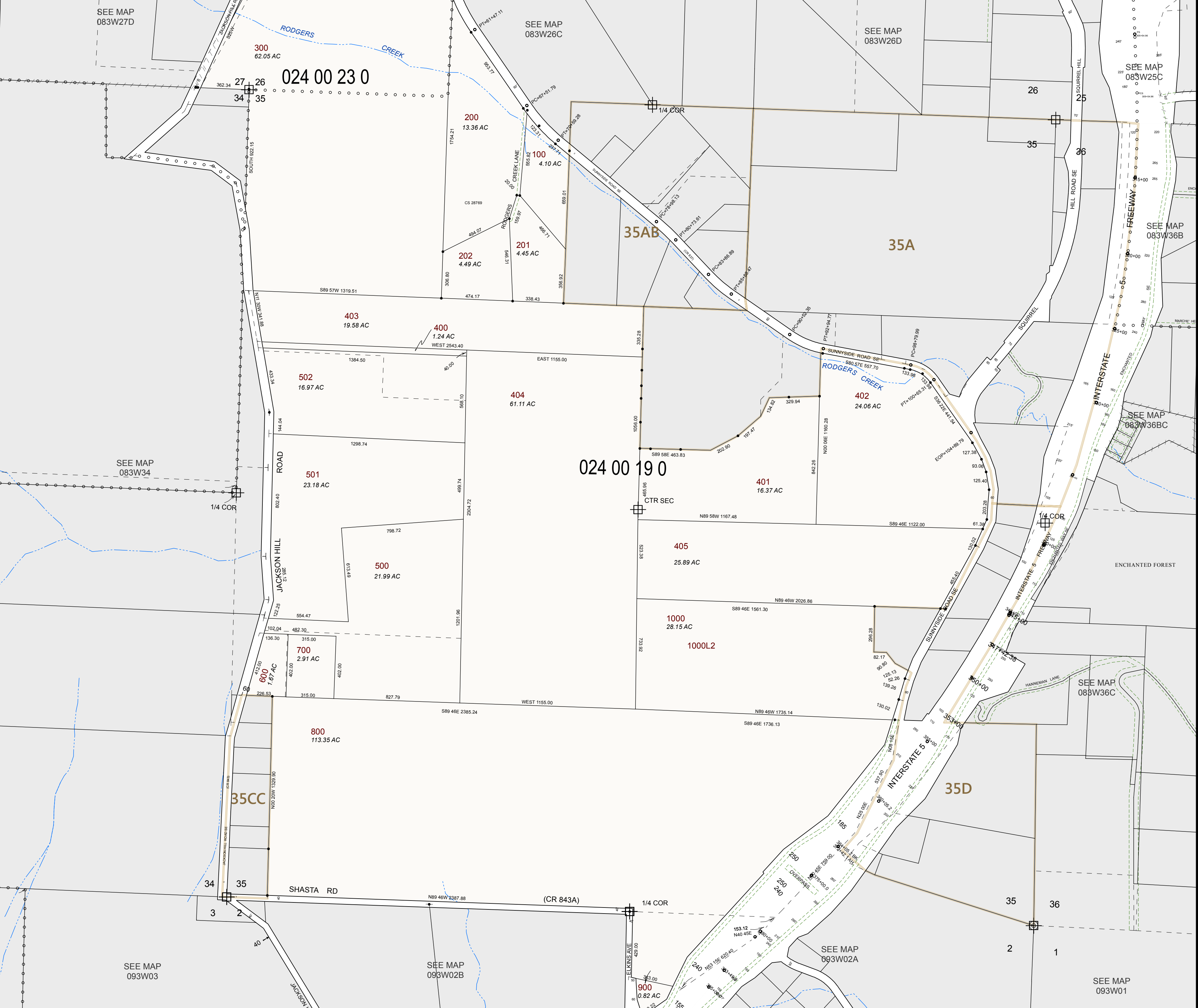


08 3W 35

08 3W 35



**MARION COUNTY, OREGON**  
 SEC 35 T8S R3W W.M.  
 SCALE 1" = 400'

**LEGEND**

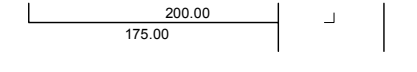
- LINE TYPES**
- Taxlot Boundary
  - Road Right-of-Way
  - Railroad Right-of-Way
  - Private Road ROW
  - Subdivision/Plat Bndry
  - Waterline - Taxlot Bndry
  - Historical Boundary
  - Easement
  - Railroad Centerline
  - Taxcode Line
  - Map Boundary
  - Waterline - Non Bndry

- SYMBOL TYPES**
- Survey Monument
  - Road Station
  - ⊙ DLC Corner
  - + 1/16TH Section Cor.
  - ⊕ 1/4 Section Cor.
  - 16 15 Section Corner
  - 21 22

**NUMBERS**  
 Tax Code Number  
**000 00 00 0**

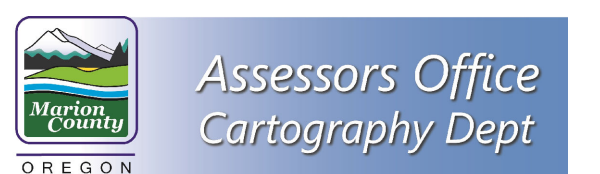
Acres  
 0.25 AC  
 All acres listed are Net Acres, excluding any portions of the taxlot within public ROWs

**NOTES**  
 Tick Marks: If a tick mark is indicated on the end of a line, then the dimension goes to the tick mark. This is used when dimensions extend into public right-of-ways.



**CANCELLED NUMBERS**


DISCLAIMER: THIS MAP WAS PREPARED FOR ASSESSMENT PURPOSES ONLY



FOR ADDITIONAL MAPS VISIT OUR WEBSITE AT [www.co.marion.or.us](http://www.co.marion.or.us)

PLOT DATE: 7/7/2016

08 3W 35

08 3W 35