

MATERIAL OBSERVATION & BORING LOCATIONS

- 1: OBSERVATION AND BORING FOR PLATES "C" AND "H" ORIGINATES AT GRID 8-M. BORINGS TO BE LOCATED AT MIN. 6' WEST OF GRID M.
- 2: OBSERVATION FOR COLUMN AT GRID 8-C.
- 3: OBSERVATION AND BORING FOR PLATES "A", "B", "D", AND "F" ORIGINATES AT GRID 8-E. BORINGS LOCATED MIN. 6' OFF OF GRID.
- 4: OBSERVATION FOR COLUMN AT GRID 5-C.
- 5: OBSERVATION FOR COLUMN AT GRID 5-E.
- 6: REMOVAL OF PEDESTRIAN PAVER SYSTEM FOR OBSERVATION.

LEGEND

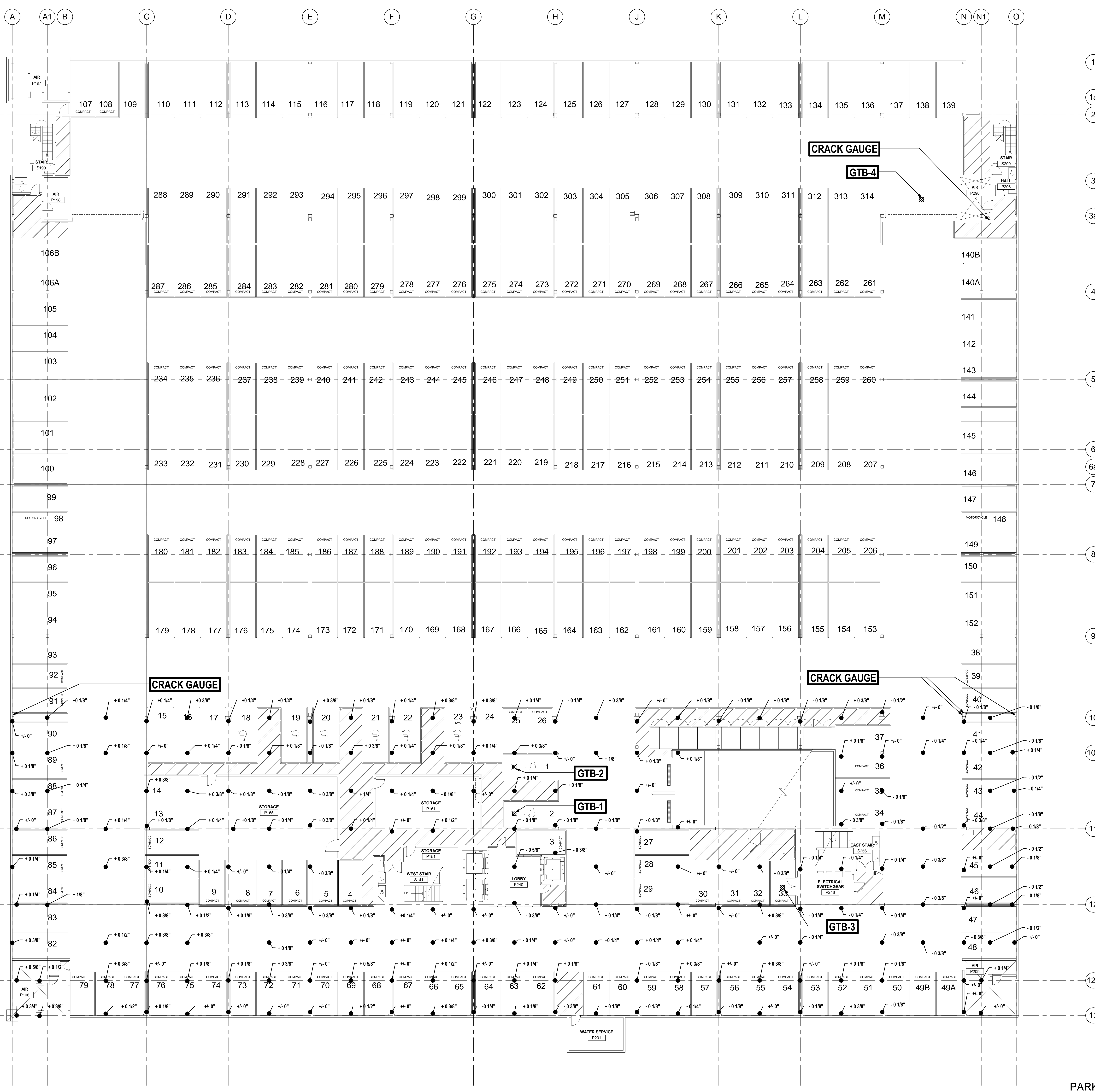
- CONCRETE POUR STRIP
- EXPLORATORY OPENINGS
- EXTENT OF GROUND PENETRATING RADAR LOCATION
- MEASUREMENTS FROM 09/09/2010 SURVEY

COURTHOUSE SQUARE REMEDIATION PROJECT

MARION COUNTY
 555 COURT ST. NE
 SALEM, OREGON 97301

REVISIONS
 CHECKED BY:
 ISSUE DATE: 2011-01-20
 PROJECT NO.: 09263

2011-01-18 4:54:24 PM
These drawings and their content are the property of SERA Architects, Inc. and are to be used only for the project. Reproduction of any part of this material, without the express written permission of SERA Architects, Inc. is prohibited.
SERA ARCHITECTS COPYRIGHT © 2011



MATERIAL TESTING LOCATIONS

- GTB1: GEOTECHNICAL BORING LOCATION NUMBER ONE
- GTB2: GEOTECHNICAL BORING LOCATION NUMBER TWO
- GTB3: GEOTECHNICAL BORING LOCATION NUMBER THREE
- GTB4: GEOTECHNICAL BORING LOCATION NUMBER FOUR

LEGEND

- CONCRETE POUR STRIP
- EXPLORATORY OPENINGS
- EXTENT OF GROUND PENETRATING RADAR LOCATION
- MEASUREMENTS FROM 09/09/2010 SURVEY

SERA
ARCHITECTURE
URBAN DESIGN + PLANNING
INTERIOR DESIGN
338 NW 5TH AVENUE
PORTLAND, OREGON 97209
P: 503.445.1372
F: 503.445.1395
SERAPSA.COM

PRELIMINARY
NOT FOR CONSTRUCTION

COURTHOUSE SQUARE REMEDIATION PROJECT

MARION COUNTY
555 COURT ST. NE
SALEM, OREGON 97301

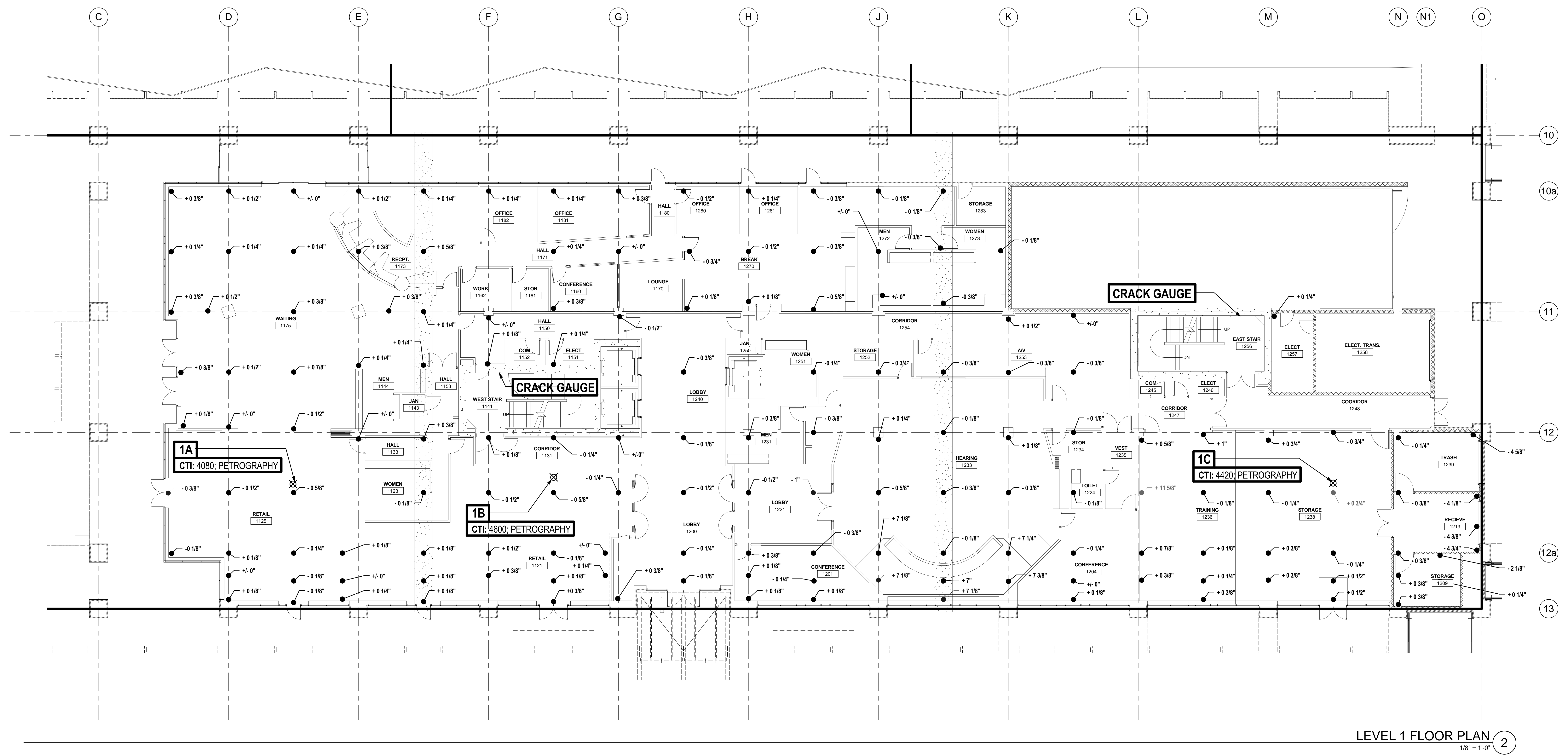
REVISIONS
CHECKED BY: 2011-01-20
ISSUE DATE: 0923
PROJECT NO:

FLOOR PLAN - PARKING
A100

PARKING LEVEL FLOOR PLAN 1
3/32" = 1'-0"

2011-01-18 4:24:25 PM

These drawings and their content are the property of SERA Architects, Inc. and are to be used only for the project. Reproduction of any part of this manual, without the express written permission of SERA Architects, Inc. is prohibited.



LEVEL 1 FLOOR PLAN
1/8" = 1'-0" 2

MATERIAL TESTING & CONCRETE CORE LOCATIONS

- 1A: FLOOR x 2: (1 x COMPRESSIVE STRENGTH; 1 x PETROGRAPHIC ANALYSIS)
LOCATE AT END OF COUNTER UNDER GARBAGE BIN.
- 1B: FLOOR x 2: (1 x COMPRESSIVE STRENGTH; 1 x PETROGRAPHIC ANALYSIS)
LOCATE NEAR FLOOR DRAIN; COORDINATE AROUND RESTAURANT EQUIPMENT.
- 1C: FLOOR x 2: (1 x COMPRESSIVE STRENGTH; 1 x PETROGRAPHIC ANALYSIS)
LOCATE UNDER TABLE.

LEGEND

- CONCRETE POUR STRIP
- EXPLORATORY OPENINGS
- EXTENT OF GROUND PENETRATING RADAR LOCATION
- MEASUREMENTS FROM 09/09/2010 SURVEY

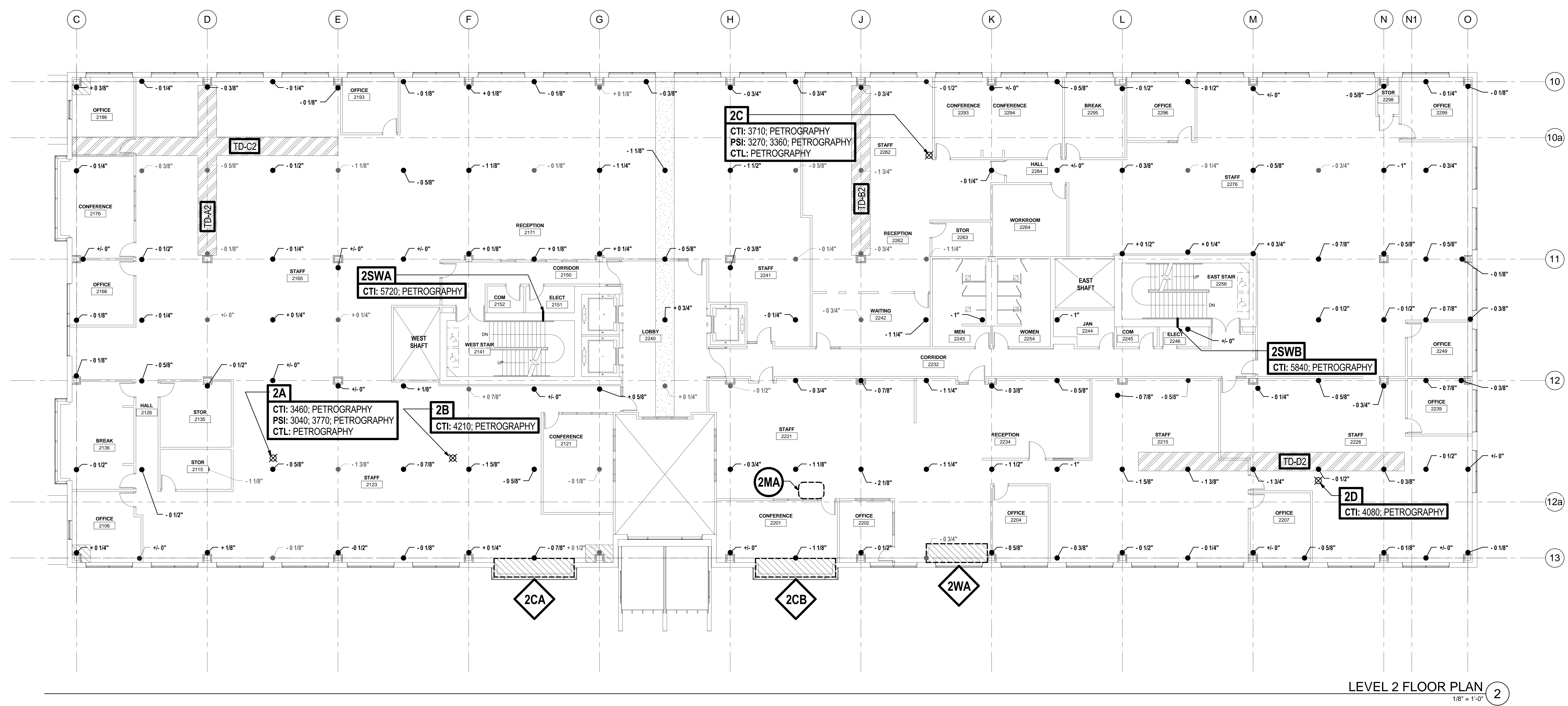
COURTHOUSE SQUARE REMEDIATION PROJECT

MARION COUNTY
555 COURT ST. NE
SALEM, OREGON 97301

REVISIONS

CHECKED BY:
ISSUE DATE: 2011-01-20
PROJECT NO.: 09263

FLOOR PLAN
- LEVEL 1
A101



LEVEL 2 FLOOR PLAN 2
1/8" = 1'-0"

WINDOW TESTING & REVEAL LOCATIONS

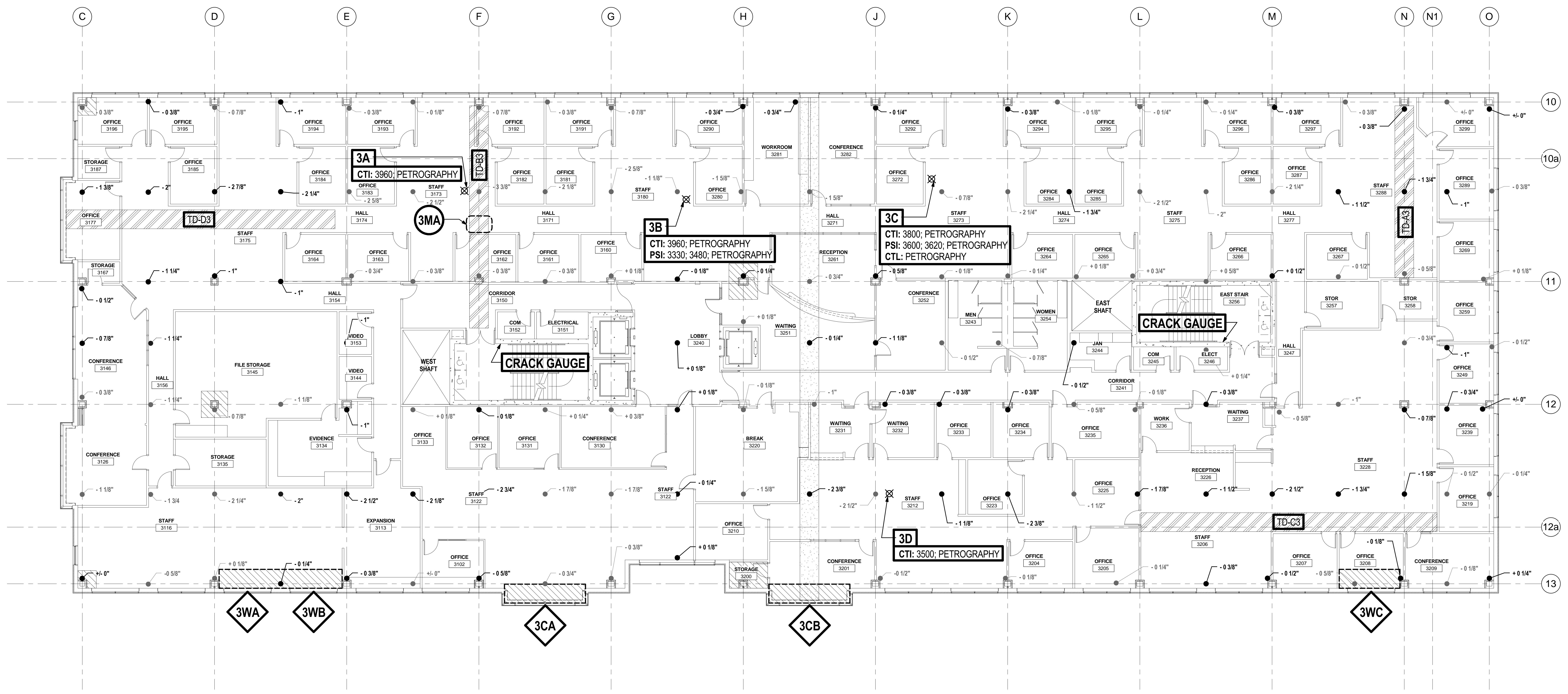
- 2CA: COVER WORKSTATIONS. PROVIDE SELECTIVE DEMOLITION OF INTERIOR SURFACE OF EXTERIOR WALL TO OBSERVE WATER INFILTRATION AS DIRECTED BY BUILDING ENVELOPE CONSULTANT.
- 2CB: MOVE FILE CABINET, TABLE, AND 10 CHAIRS. PROVIDE SELECTIVE DEMOLITION OF INTERIOR SURFACE OF EXTERIOR WALL TO OBSERVE WATER INFILTRATION AS DIRECTED BY BUILDING ENVELOPE CONSULTANT.
- 2WA: MOVE POWER PARTITION (POWERS 4 STATIONS), WORK SURFACE, SMALL REFRIGERATOR, SMALL ITEMS, BLINDS / BRACKETS. PROVIDE SELECTIVE DEMOLITION OF INTERIOR SURFACE OF EXTERIOR WALL TO OBSERVE WATER INFILTRATION AS DIRECTED BY BUILDING ENVELOPE CONSULTANT.
- 2MA: REMOVE (1) 2X4 CEILING TILE NEAR STRIKE SIDE OF DOOR TO OBSERVE WALL CONDITION ABOVE CEILING.

MATERIAL TESTING & CONCRETE CORE LOCATIONS

- 2A: FLOOR x 2: (1 x COMPRESSIVE STRENGTH; 1 x PETROGRAPHIC ANALYSIS) LOCATE UNDER COPY MACHINE.
- 2B: FLOOR x 1: (1 x COMPRESSIVE STRENGTH). TEMPORARILY RELOCATE DESK; LOCATE UNDER DESK; COORDINATE LOCATION TO AVOID BANDED STRESSED TENDONS.
- 2C: FLOOR x 1: (1 x COMPRESSIVE STRENGTH) LOCATE UNDER BOOKCASE.
- 2D: FLOOR x 2: (1 x COMPRESSIVE STRENGTH; 1 x PETROGRAPHIC ANALYSIS)
- 2SWA: SHEAR WALL x 1 (COMBINED COMPRESSIVE STRENGTH & PETROGRAPHIC ANALYSIS)
- 2SWb: SHEAR WALL x 1 (COMBINED COMPRESSIVE STRENGTH & PETROGRAPHIC ANALYSIS)

LEGEND

- CONCRETE POUR STRIP
- EXPLORATORY OPENINGS
- EXTENT OF GROUND PENETRATING RADAR LOCATION
- MEASUREMENTS FROM 09/09/2010 SURVEY



LEVEL 3 FLOOR PLAN 1
1/8" = 1'-0"

WINDOW TESTING & REVEAL LOCATIONS

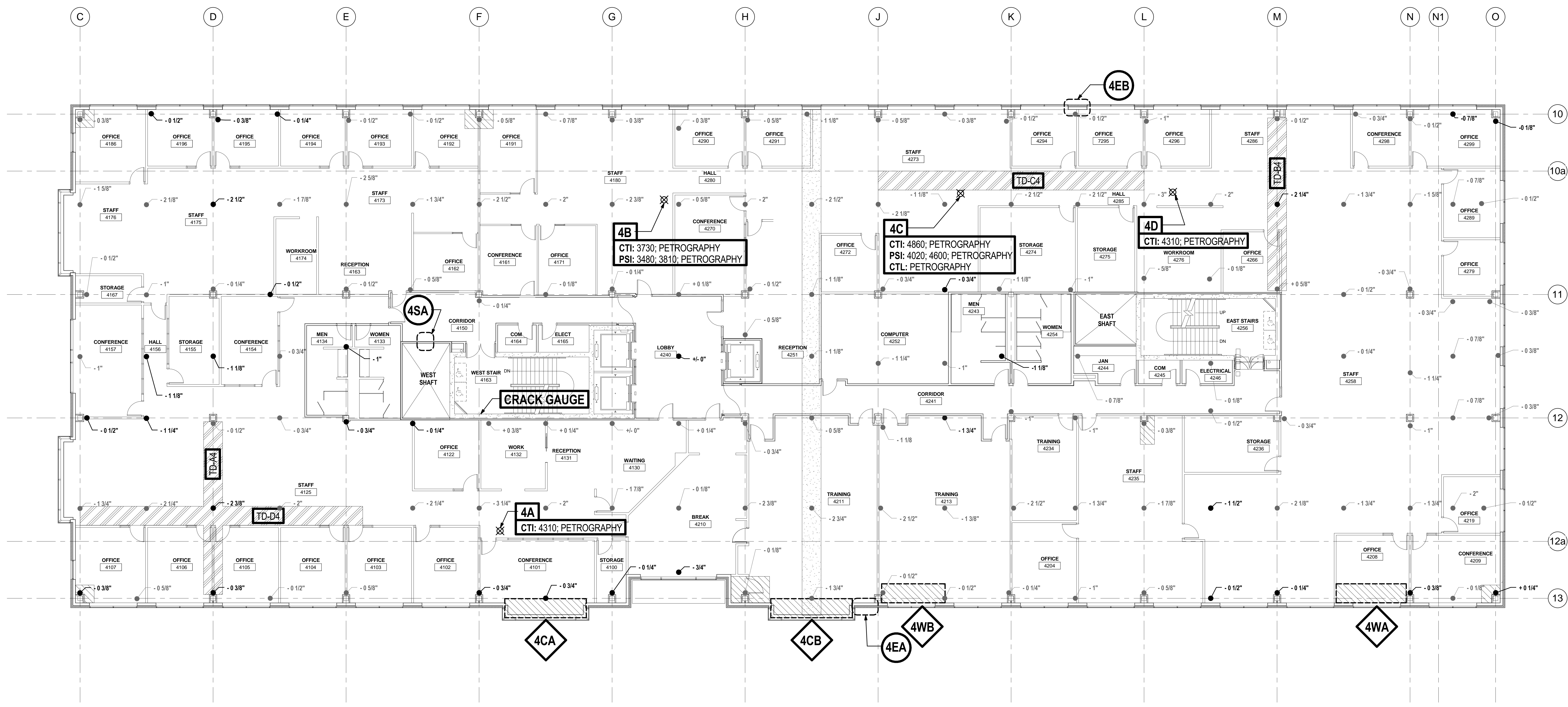
- 3CA: MOVE 2 TABLES AND 5 CHAIRS. PROVIDE SELECTIVE DEMOLITION OF INTERIOR SURFACE OF EXTERIOR WALL TO OBSERVE WATER INFILTRATION AS DIRECTED BY BUILDING ENVELOPE CONSULTANT.
- 3CB: MOVE TABLE AND 12 CHAIRS. PROVIDE SELECTIVE DEMOLITION OF INTERIOR SURFACE OF EXTERIOR WALL TO OBSERVE WATER INFILTRATION AS DIRECTED BY BUILDING ENVELOPE CONSULTANT.
- 3WA: MOVE BLINDS / BRACKETS. PROVIDE SELECTIVE DEMOLITION OF INTERIOR SURFACE OF EXTERIOR WALL TO OBSERVE WATER INFILTRATION AS DIRECTED BY BUILDING ENVELOPE CONSULTANT.
- 3WB: MOVE BLINDS / BRACKETS. PROVIDE SELECTIVE DEMOLITION OF INTERIOR SURFACE OF EXTERIOR WALL TO OBSERVE WATER INFILTRATION AS DIRECTED BY BUILDING ENVELOPE CONSULTANT.
- 3WC: MOVE COMPUTER, PHONE, DESK, 2 FILE CABINETS, SMALL ITEMS, BOOKCASE, BLINDS / BRACKETS. PROVIDE SELECTIVE DEMOLITION OF INTERIOR SURFACE OF EXTERIOR WALL TO OBSERVE WATER INFILTRATION AS DIRECTED BY BUILDING ENVELOPE CONSULTANT.
- 3MA: REMOVE (1) 2X4 CEILING TILE NEAR STRIKE SIDE OF DOOR TO OBSERVE WALL CONDITION ABOVE CEILING

MATERIAL TESTING & CONCRETE CORE LOCATIONS

- 3A: FLOOR x 2: (1 x COMPRESSIVE STRENGTH; 1 x PETROGRAPHIC ANALYSIS) LOCATE UNDER DESK; COORDINATE LOCATION TO AVOID BANDED STRESSED TENDONS.
- 3B: FLOOR x 1: (1 x COMPRESSIVE STRENGTH). LOCATE UNDER BINS.
- 3C: FLOOR x 2: (1 x COMPRESSIVE STRENGTH; 1 x PETROGRAPHIC ANALYSIS) LOCATE UNDER DESK NEAR OFFICE # 3212.
- 3D: FLOOR x 2: (1 x COMPRESSIVE STRENGTH; 1 x PETROGRAPHIC ANALYSIS) TEMPORARILY RELOCATE DESK; LOCATE UNDER DESK; COORDINATE LOCATION TO AVOID BANDED STRESSED TENDONS.

LEGEND

- CONCRETE POUR STRIP
- EXPLORATORY OPENINGS
- EXTENT OF GROUND PENETRATING RADAR LOCATION
- MEASUREMENTS FROM 09/09/2010 SURVEY



LEVEL 4 FLOOR PLAN 1
1/8" = 1'-0"

WINDOW TESTING & REVEAL LOCATIONS

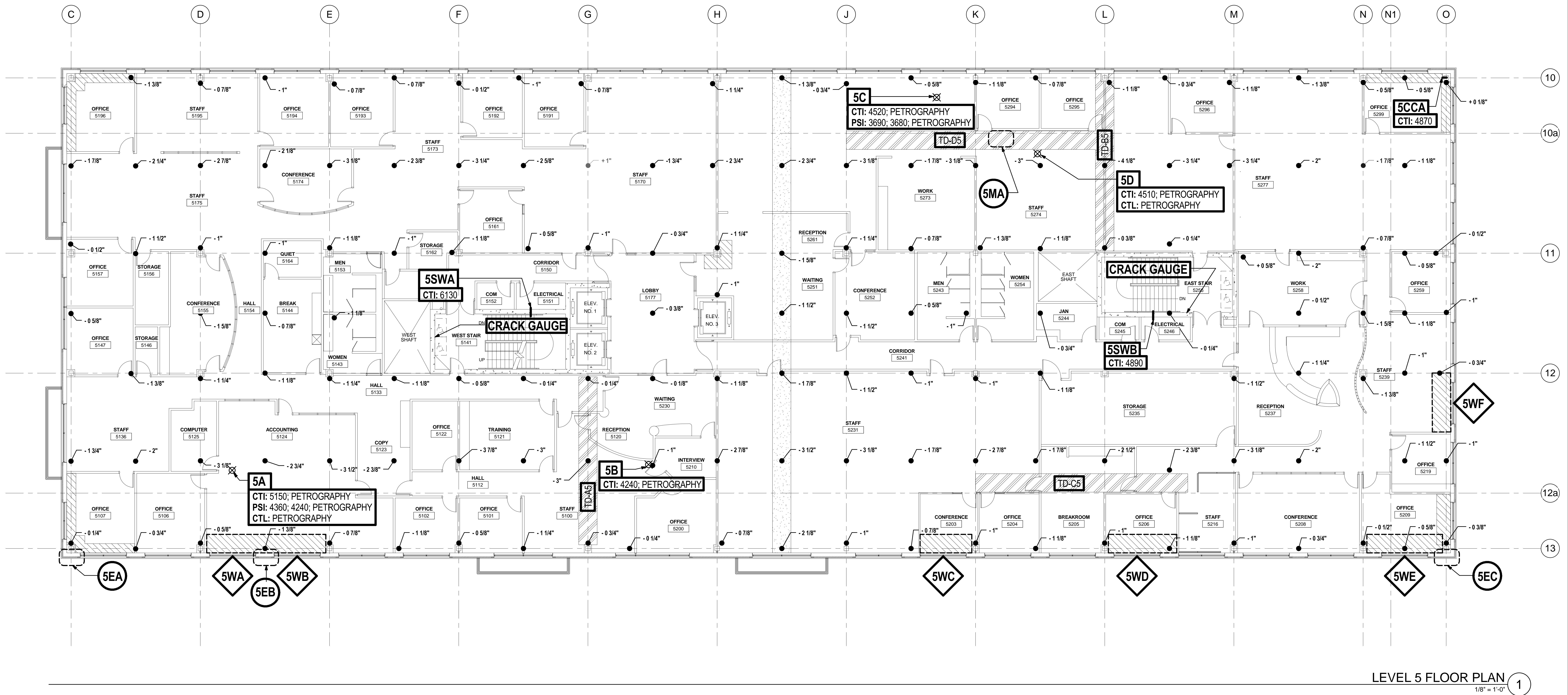
- 4CA: MOVE CONFERENCE TABLE AND 20 CHAIRS. PROVIDE SELECTIVE DEMOLITION OF INTERIOR SURFACE OF EXTERIOR WALL TO OBSERVE WATER INFILTRATION AS DIRECTED BY BUILDING ENVELOPE CONSULTANT.
- 4CB: MOVE 6 TABLES. PROVIDE SELECTIVE DEMOLITION OF INTERIOR SURFACE OF EXTERIOR WALL TO OBSERVE WATER INFILTRATION AS DIRECTED BY BUILDING ENVELOPE CONSULTANT.
- 4WA: MOVE FILES, TABLE, 4 CHAIRS, AND BLINDS / BRACKETS PROVIDE SELECTIVE DEMOLITION OF INTERIOR SURFACE OF EXTERIOR WALL TO OBSERVE WATER INFILTRATION AS DIRECTED BY BUILDING ENVELOPE CONSULTANT.
- 4WB: MOVE TABLE, CHAIRS, AND BLINDS / BRACKETS PROVIDE SELECTIVE DEMOLITION OF INTERIOR SURFACE OF EXTERIOR WALL TO OBSERVE WATER INFILTRATION AS DIRECTED BY BUILDING ENVELOPE CONSULTANT.
- 4EA: BRICK REMOVAL TO OBSERVE CURTAIN WALL / BRICK INTERFACE. BUILDING SHEATHING AND WATER PROOFING REMOVAL TO OBSERVE CONCRETE SLAB EDGE CONDITION. PROVIDE SELECTIVE DEMOLITION OF EXTERIOR BRICK AS DIRECTED BY BUILDING ENVELOPE CONSULTANT.
- 4EB: BRICK REMOVAL TO OBSERVE WATERPROOFING CONDITION. PROVIDE SELECTIVE DEMOLITION OF EXTERIOR BRICK AS DIRECTED BY BUILDING ENVELOPE CONSULTANT.
- 4SA: REMOVE FIRE RATED SHAFT WALL ABOVE CEILING TILE TO OBSERVE CONDITION OF MECHANICAL SHAFT.
- 4MA: REMOVE (1) 2X4 CEILING TILE TO OBSERVE CONDITION OF MECHANICAL AND ELECTRICAL EQUIPMENT ABOVE CEILING.

MATERIAL TESTING & CONCRETE CORE LOCATIONS

- 4A: FLOOR x 1: (1 x COMPRESSIVE STRENGTH). LOCATE NEAR WALL BETWEEN DOOR FRAME AND WINDOW; PROTECT AREA FROM DAMAGE.
- 4B: FLOOR x 2: (1 x COMPRESSIVE STRENGTH; 1 x PETROGRAPHIC ANALYSIS) LOCATE NEAR WALL.
- 4C: FLOOR x 2: (1 x COMPRESSIVE STRENGTH; 1 x PETROGRAPHIC ANALYSIS) LOCATE WHERE INDICATED.
- 4D: FLOOR x 2: (1 x COMPRESSIVE STRENGTH; 1 x PETROGRAPHIC ANALYSIS) LOCATE NEAR WALL.
- 5A: CEILING: REMOVE CEILING TILE; COORDINATE WITH CEILING ELEMENTS; PROTECT ELEMENTS FROM DAMAGE.
- 5B: CEILING: REMOVE CEILING TILE; COORDINATE WITH CEILING ELEMENTS
- 5C: CEILING: REMOVE CEILING TILE; COORDINATE WITH CEILING ELEMENTS; COORDINATE WITH DESK AND SYSTEMS FURNITURE.
- 5D: CEILING: REMOVE CEILING TILE; COORDINATE WITH CEILING ELEMENTS

LEGEND

- CONCRETE POUR STRIP
- EXPLORATORY OPENINGS
- EXTENT OF GROUND PENETRATING RADAR LOCATION
- MEASUREMENTS FROM 09/09/2010 SURVEY



LEVEL 5 FLOOR PLAN 1
1/8" = 1'-0"

COURTHOUSE SQUARE REMEDIATION PROJECT

MARION COUNTY
555 COURT ST. NE
SALEM, OREGON 97301

REVISIONS

DRAWN BY: 2011-01-20
ISSUE DATE: 09263
PROJECT NO.:

FLOOR PLAN
- LEVEL 5
A105

WINDOW TESTING & REVEAL LOCATIONS

- 5WA: MOVE COMPUTER, PHONE, PARTITION, WORK SURFACE, FILE CABINET, AND BLINDS / BRACKETS. PROVIDE SELECTIVE DEMOLITION OF INTERIOR SURFACE OF EXTERIOR WALL TO OBSERVE WATER INFILTRATION AS DIRECTED BY BUILDING ENVELOPE CONSULTANT.
- 5WB: MOVE COMPUTER, PHONE, PARTITION, WORK SURFACE, FILE CABINET, AND BLINDS / BRACKETS. PROVIDE SELECTIVE DEMOLITION OF INTERIOR SURFACE OF EXTERIOR WALL TO OBSERVE WATER INFILTRATION AS DIRECTED BY BUILDING ENVELOPE CONSULTANT.
- 5WC: MOVE LARGE MONITOR AND BLINDS / BRACKETS. PROVIDE SELECTIVE DEMOLITION OF INTERIOR SURFACE OF EXTERIOR WALL TO OBSERVE WATER INFILTRATION AS DIRECTED BY BUILDING ENVELOPE CONSULTANT.
- 5WD: MOVE FILE CABINET, BOOKCASE AND BLINDS / BRACKETS. PROVIDE SELECTIVE DEMOLITION OF INTERIOR SURFACE OF EXTERIOR WALL TO OBSERVE WATER INFILTRATION AS DIRECTED BY BUILDING ENVELOPE CONSULTANT.
- 5WE: MOVE 2 BOOKCASES, SOFA, AND BLINDS / BRACKETS. PROVIDE SELECTIVE DEMOLITION OF INTERIOR SURFACE OF EXTERIOR WALL TO OBSERVE WATER INFILTRATION AS DIRECTED BY BUILDING ENVELOPE CONSULTANT.
- 5WF: MOVE FILE CABINET, PLANT, CHAIR, AND BLINDS / BRACKETS. PROVIDE SELECTIVE DEMOLITION OF INTERIOR SURFACE OF EXTERIOR WALL TO OBSERVE WATER INFILTRATION AS DIRECTED BY BUILDING ENVELOPE CONSULTANT.
- 5EA: BRICK REMOVAL TO OBSERVE BRICK ASSEMBLY. PROVIDE SELECTIVE DEMOLITION OF EXTERIOR BRICK AS DIRECTED BY BUILDING ENVELOPE CONSULTANT.
- 5EB: BRICK REMOVAL TO OBSERVE BRICK ASSEMBLY AND WINDOW / WALL ASSEMBLY. PROVIDE SELECTIVE DEMOLITION OF EXTERIOR BRICK AS DIRECTED BY BUILDING ENVELOPE CONSULTANT.
- 5EC: BRICK REMOVAL TO OBSERVE BRICK ASSEMBLY. PROVIDE SELECTIVE DEMOLITION OF EXTERIOR BRICK AS DIRECTED BY BUILDING ENVELOPE CONSULTANT.
- 5MA: REMOVE (1) 2X4 CEILING TILE NEAR STRIKE SIDE OF DOOR TO OBSERVE WALL CONDITION ABOVE CEILING

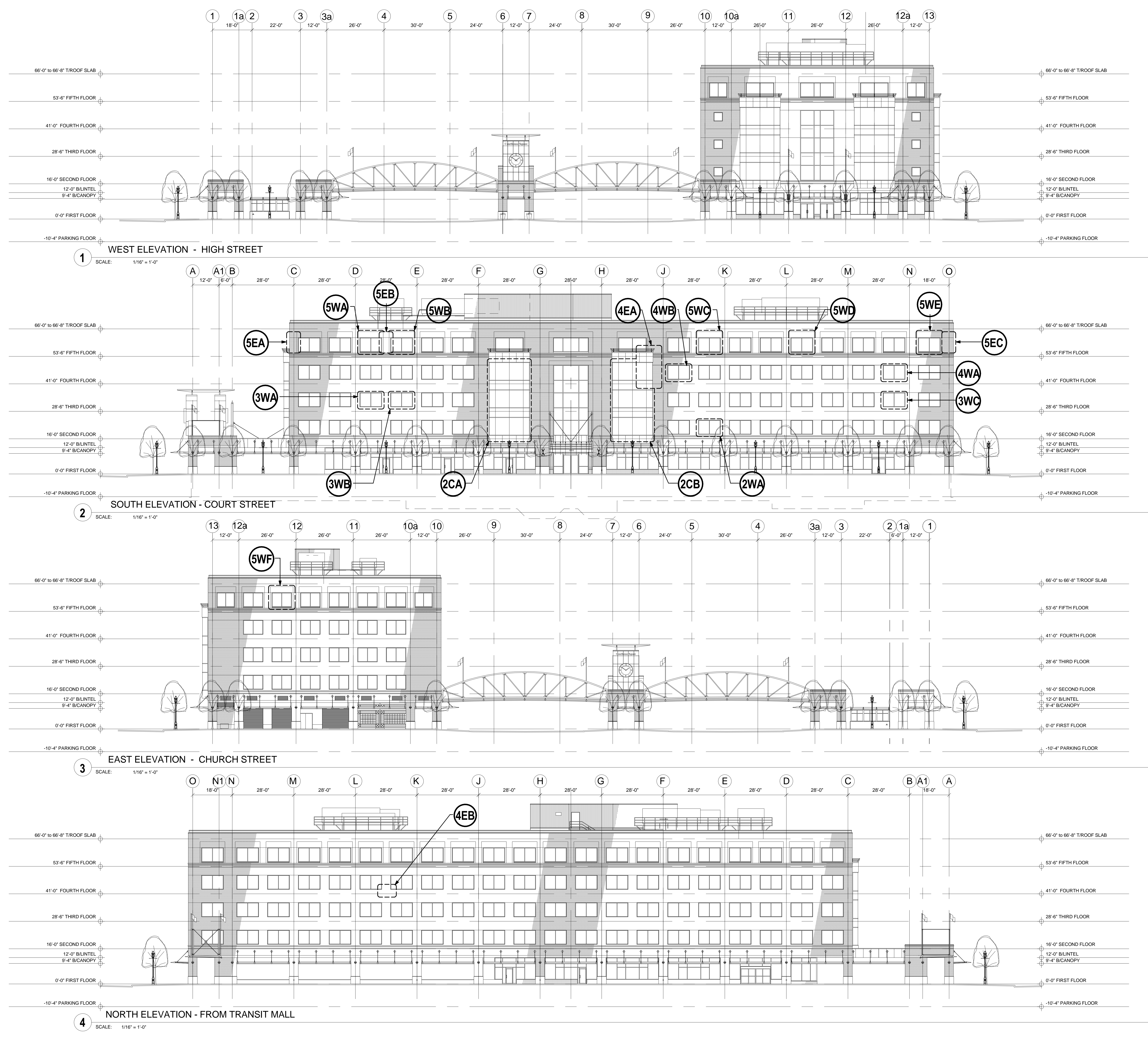
MATERIAL TESTING & CONCRETE CORE LOCATIONS

- 5A: FLOOR x 2: (1 x COMPRESSIVE STRENGTH; 1 x PETROGRAPHIC ANALYSIS) LOCATE IN EMPTY OFFICE CUBICLE.
- 5A ALTERNATE: FLOOR x 2: (1 x COMPRESSIVE STRENGTH; 1 x PETROGRAPHIC ANALYSIS) LOCATE IN AISLE SPACE BETWEEN OFFICE CUBICLES.
- 5B: FLOOR x 1: (1 x COMPRESSIVE STRENGTH). LOCATE NEAR WALL; PROTECT AREA FROM DAMAGE.
- 5C: FLOOR x 1: (1 x COMPRESSIVE STRENGTH). LOCATE IN WORN CARPET AREA.
- 5D: FLOOR x 2: (1 x COMPRESSIVE STRENGTH; 1 x PETROGRAPHIC ANALYSIS) LOCATE WHERE INDICATED.
- 5SWA: SHEAR WALL x 1 (COMPRESSIVE STRENGTH ANALYSIS)
- 5SWB: SHEAR WALL x 1 (COMPRESSIVE STRENGTH ANALYSIS)
- 5CCA: SHEAR WALL x 1 (COMBINED COMPRESSIVE STRENGTH & PETROGRAPHIC ANALYSIS)

LEGEND

- CONCRETE POUR STRIP
- EXPLORATORY OPENINGS
- EXTENT OF GROUND PENETRATING RADAR LOCATION
- MEASUREMENTS FROM 09/09/2010 SURVEY

PRELIMINARY
 NOT FOR CONSTRUCTION



- KEYNOTES:**
- 2WA: WINDOW WATER INFILTRATION TEST.
 - 2CA: CURTAIN WALL WATER INFILTRATION TEST FLOORS 2 - 4.
 - 2CB: CURTAIN WALL WATER INFILTRATION TEST FLOORS 2 - 4.
 - 3WA: WINDOW WATER INFILTRATION TEST.
 - 3WB: WINDOW WATER INFILTRATION TEST.
 - 3WC: WINDOW WATER INFILTRATION TEST.
 - 4WA: WINDOW WATER INFILTRATION TEST.
 - 4WB: WINDOW WATER INFILTRATION TEST.
 - 4EA: BRICK REMOVAL.
 - 4EB: BRICK REMOVAL.
 - 5WA: WINDOW WATER INFILTRATION TEST.
 - 5WB: WINDOW WATER INFILTRATION TEST.
 - 5WC: WINDOW WATER INFILTRATION TEST.
 - 5WD: WINDOW WATER INFILTRATION TEST.
 - 5WE: WINDOW WATER INFILTRATION TEST.
 - 5WF: WINDOW WATER INFILTRATION TEST.
 - 5EA: BRICK REMOVAL.
 - 5EB: BRICK REMOVAL.
 - 5EC: BRICK REMOVAL.